



OUTDOOR & TACTICAL SYSTEMS

INTERNATIONAL PRODUCT CATALOG



The World's *Sixth Sense*®

CONTENT

THERMAL MONOCULARS

Scout TK	7
Scout II	7
Scout III	7
LS-X / LS-XR	8
TS-X PRO / TS-XR PRO	9
HS-X / HS-XR	10
Command C	11
Command Mini	11
Command MCR	12
Command MR	12
Command MLR	13
Command MXL	13
Command MR PRO	14
Command MXL PRO	14
Q14-B	15

THERMAL BINOCULARS

BTS-X PRO / BTS-XR PRO	16
BHS-X / BHS-XR	17
Command BMR	18
Command BLR	19
Command BXL	19
Command BMR PRO	20
Command BXL PRO	20

THERMAL RIFLE SCOPES

ThermoSight RS	21
ThermoSight RM	22
ThermoSight RL	23
ThermoSight RX	23
ThermoSight RM PRO	24
ThermoSight RX PRO	24

THERMAL CLIP-ONS

ThermoSight C	25
ThermoSight CM	26
ThermoSight CL	26
Thermosight CM PRO	27
Thermosight CL PRO	27

IRIS-W HMD	28
AMRF-2200	29
AMRF-2200B	29

NIGHT VISION MONOCULARS

Vega-Mini	31
Avenger 10x	32
Spark	33
Sirius	34
PVS-14	35
Nyx-14M / N-14	36

NIGHT VISION GOGGLES

Spark-G	38
Nyx-7	39
Nyx-7 PRO	40
PVS-7	41
Nyx-15M	42
N-15	43

NIGHT VISION BINOCULARS

Dark Strider	44
Eagle	44
Discovery	45
Janus	46

NIGHT VISION RIFLE SCOPES

WWZ	47
Orion	47
Vampire	48
Nemesis	49
Vulcan	50
Drone PRO	52

NIGHT VISION CLIP-ONS

CO-Mini	53
CO-X / CO-MRX	54
CO-LR / CO-LR LRF	55
CO-XLR LRF	56

IR850-XLR	57
MSI8000	57

DIRECT VIEW AND LASER SYSTEMS

AIM PRO / AIM PRO-L	59
MCS	60
Drakos	61
T-MAIM	62
8x36 / 8x30C / 7x50	63



EXPORT INFORMATION

EXPORT REGULATIONS: The use, sale, re-export, delivery or retransfer, directly or indirectly, of FLIR products and technology is subject to and contingent upon compliance with U.S. Export Regulations.

Please visit www.flir.com or contact exportquestions@flir.com for more information.

Specifications are subject to change without notice.



The World's **Sixth Sense**®

FLIR's Outdoor and Tactical Systems (OTS) line is dedicated to bringing you the most complete line-up of consumer outdoor and tactical vision products in the world. The unquestioned world leader in thermal and night vision (I²) sights and scopes, the FLIR OTS product portfolio brings outdoorsmen and women a selection of such depth and quality it cannot be matched anywhere in the industry.

With a nearly 50-year heritage of bringing combat-proven nighttime vision solutions to the front lines, FLIR has the expertise and commitment to provide the best sights and scopes to outdoorsmen and shooting professionals alike. Our Field Tested, Field Proven model lets FLIR bring the latest technology to market faster and more affordably than anyone else.

A man with a beard, wearing a tan cap and camouflage gear, is looking through a FLIR thermal scope. The background is a snowy forest with evergreen trees. The FLIR logo is visible on the scope.

THERMAL IMAGING TECHNOLOGIES

Thermal imagers detect and display tiny differences in the invisible heat energy that is emitted from all objects, living or inanimate. By capturing this wavelength of energy, FLIR Thermal imagers build a picture of your surroundings based on the heat, not light, which delivers numerous performance benefits for hunters, outdoorsmen and tactical operators.

Based on FLIR's cutting-edge and field-tested longwave infrared (LWIR) camera cores, these thermal scopes and sights show you the "heat signature" of every object within their field of view. Requiring no external illumination, these products perform just as well in pitch dark as during broad daylight. They can also see through many atmospheric obscurants like dust, smoke, smog, and light fog. Thermal imaging is truly your 6th Sense.

A close-up, profile view of a soldier in a desert environment. The soldier is wearing a tan helmet with a night vision device (NVG) mounted on the front. The NVG has a lens with a small 'MK' marking. The soldier is also wearing clear protective eyewear. He is holding an M4-style rifle with a tan finish. The rifle has a scope mounted on top and a magazine. The soldier's face is visible, showing a focused expression. The background is a dark, rocky desert landscape under a clear sky.

NIGHT VISION TECHNOLOGIES

Scopes, and sights built around “night vision” technology (commonly referred to as “NVG”, or “image intensified”) make images from the same visible light we can see with our eyes. They take in the small amounts of light available at night that comes from starlight, moonlight, or auxiliary illuminators, magnify them greatly, and create an image on a built-in display. This lets you see clearly at night, and gives you familiar images that are similar to what you see with your eyes so no additional training in image interpretation is required.



THERMAL IMAGING

FLIR SCOUT TK®

Thermal Imaging Monocular

The FLIR Scout TK is a pocket-sized thermal vision monocular for exploring the outdoors at night and in lowlight conditions. Scout TK reveals your surroundings and helps you see people, objects and animals over 100 yards (90 m) away. Simple to use, with still image and video recording, Scout TK is the perfect companion, whether in the back country or your own backyard.

FLIR SCOUT II®

Thermal Imaging Monocular

The compact, lightweight FLIR Scout II thermal handheld camera gives you clear, crisp thermal imagery from dawn to dusk and through the dead of night. If you can't bear to miss a thing while exploring the great outdoors, the Scout II is your ticket to experience the night as never before.

FLIR SCOUT III®

Thermal Imaging Monocular

Scout III is the next generation of FLIR's field-proven line of compact thermal night vision monoculars. Offering enhanced performance with 30 Hz or 60 Hz imaging, and advanced image processing, the Scout III family is ready for your next adventure in the great outdoors. Scout III displays the heat emitted by animals, humans, and terrain — day or night — and has multiple applications for legal hunting, camping, land management, and outdoor recreation.

SPECS	SCOUT TK	SCOUT II 240	SCOUT II 320	SCOUT II 640	SCOUT III 240	SCOUT III 320	SCOUT III 640
DETECTOR	160 × 120 Lepton®	240 × 180	336 × 256	640 × 512	240 × 180	336 × 256	640 × 512
LENS	13 mm Fixed Focus	13 mm Fixed Focus	19 mm Fixed Focus	33 mm Fixed Focus	13 mm Fixed Focus	19 mm Fixed Focus	33 mm Fixed Focus
FIELD OF VIEW	18° × 14°	24° × 18°	17° × 13°	18° × 14°	24° × 18°	17° × 13°	18° × 14°
ZOOM	No	No	2x	2x, 4x	No	2x	2x, 4x
REFRESH RATE	<9 Hz	<9 Hz	<9 Hz	<9 Hz	30 Hz	60 Hz	30 Hz
VIDEO CAPABLE	Video Capture	No	Composite Video Out	No	Composite Video Out	Composite Video Out	Composite Video Out
DIMENSIONS	14.9 × 5.5 × 5.5 mm (6 × 2 × 2")	15.7 × 5.8 × 3.2 mm (6.7 × 2.31 × 2.44")					
WEIGHT	170 g (6 oz)	340 g (12 oz)					

PART NO.	MODEL
431-0012-21-00S	Scout TK Compact Monocular
431-0008-21-00S	Scout II-240 <9 Hz Thermal Imager
431-0009-21-00S	Scout II-320 <9 Hz Thermal Imager
431-0019-21-00S	Scout II-640 <9 Hz Thermal Imager
431-0008-31-00	Scout III-240 30 Hz Thermal Imager
431-0009-31-00	Scout III-320 60 Hz Thermal Imager
431-0019-31-00	Scout III-640 30 Hz Thermal Imager

PART NO.	ACCESSORIES
4126884	Camera Carrying Pouch, Black, Scout II and LS-Series
4127499	Camera Case - Rigid, Scout II and LS Series
4126887	Camera Holster MOLLE - Backpack/Belt, Tan, Scout II and LS Series
4126886	Camera Holster MOLLE - Backpack/Belt, Green, Scout II and LS Series
4132304	Camera Holster MOLLE - Backpack/Belt, Black, Scout II and LS Series

PART NO.	ACCESSORIES (CONTINUED)
4127305	Floating Lanyard, Orange, Scout II and LS Series
4127306	Lens Cap, Scout II and LS Series
4127307	Camera Lanyard, Scout II Series, Black
4127308	USB Cable, Scout II (320 Only) and LS Series, Charge/Video out
4127309	Eye Cup, Scout II and LS Series
4131103	Multi-Prong USB charger (US/UK/EU/AUS plugs)



FLIR **LS-X**

Thermal Imaging Monocular

FLIR **LS-XR**

Thermal Imaging Monocular

FLIR's LS-X and LS-XR handheld thermal night vision monoculars are built specifically for those who serve and protect. This powerful, yet simple imager gives Law Enforcement an unfair advantage whether searching for evidence or pursuing a suspect, all in the palm of your hand. The newest additions to this field-proven line, LS-X and the LS-XR, feature enhanced resolution displays, extended zoom capabilities, and video output. Whatever you are searching for, find it with FLIR.

- Enhanced resolution LCD display
- Simplified push-button operation
- Multiple InstAlert™ levels call attention to hot objects
- Red laser pointer
- Standard ¼-20 tripod mount

SPECS	LS-X	LS-XR
DETECTOR	336 × 256	640 × 512
LENS	19 mm	35 mm
FIELD OF VIEW	17° × 13°	18° × 14°
ZOOM	2x, 4x	2x, 4x , 8x
REFRESH RATE	7.5 or 9 or 60 Hz	7.5 or 9 or 30 Hz
VIDEO CAPABLE	Video Output	Video Output
DIMENSIONS	172 × 58.7 × 62 mm (6.7 × 2.31 × 2.44")	
WEIGHT	0.34 kg (0.74 lb)	

PART NO.	MODEL
431-0010-01-00	LS-X (336x256) 19mm, PAL 60Hz
431-0010-01-00S	LS-X (336x256) 19mm, PAL 9Hz
431-0011-01-00	LS-XR (640x512) 35mm, PAL 30 Hz
431-0011-01-00S	LS-XR (640x512) 35mm, PAL 9Hz
431-0010-21-00	LS-X (336x256) 19mm, NTSC 60Hz
431-0010-21-00S	LS-X (336x256) 19mm, NTSC 7.5 Hz
431-0011-21-00	LS-XR (640x512) 35mm, NTSC 30 Hz
431-0011-21-00S	LS-XR (640x512) 35mm, NTSC 7.5 Hz
ACCESSORIES	
4126884	Camera Carrying Pouch, Black, Scout II and LS Series
4127499	Camera Case - Rigid, Scout II and LS Series
4126887	Camera Holster MOLLE - Backpack/Belt, Tan, Scout II and LS Series
4126886	Camera Holster MOLLE - Backpack/Belt, Green, Scout II and LS Series
4132304	Camera Holster MOLLE - Backpack/Belt, Black, Scout II and LS Series
4127305	Floating Lanyard, Orange, Scout II and LS Series
4127306	Lens Cap, Scout II and LS Series
4127307	Camera Lanyard, Scout II Series, Black
4127308	USB Cable, Scout II (320 Only) and LS Series, Charge/Video out
4127309	Eye Cup, Scout II and LS Series
4131103	Multi-Prong USB charger (US/UK/EU/AUS plugs)



FLIR TS-X PRO[®]

Thermal Imaging Monocular

When you want a thermal camera that's easy to pack, easy to use, and delivers a high-quality thermal image that you can rely on, the FLIR TS-X Series of thermal night vision cameras are your ideal choice. Multiple lens and thermal detector options allow you to customize the right camera for you. Tracking game in a heavily forested area? TS-X lets you see in the dark and through light foliage and camouflage. Monitoring a herd? Perhaps the TS-XR is your best option, so you can observe from more than a half-mile away.

The TS-Series continues to provide unparalleled field performance and value along with excellent image quality. An expanded array of six models with differing resolutions and optical performance, field-swappable batteries, and available image and video capture make the TS-Series perfect for expedition leaders, wildlife management professionals, and ranchers.

The TS-Series is available with a stand-alone body that accepts interchangeable 35, 65, and 100 mm lenses.

- Multiple lens options
- Compact thermal night vision
- Easy operation
- Three selectable palettes
- Shuttered eyepiece
- Rugged all-weather design

FLIR TS-XR PRO[®]

Thermal Imaging Monocular

SPECS	TS-X PRO			TS-XR PRO		
DETECTOR	320 × 240			640 × 480		
LENS (OPTIONAL)	35 mm	65 mm	100 mm	35 mm	65 mm	100 mm
FIELD OF VIEW	13° × 10°	7° × 5°	5° × 3°	18° × 13°	10° × 8°	6° × 4°
ZOOM	2x, 4x			2x, 4x, 8x		
REFRESH RATE	9 Hz			9 Hz		
VIDEO CAPABLE	Video Out / SD Card			Video Out / SD Card		
DIMENSIONS	238 × 85 × 67 mm (9.36 × 3.33 × 2.62")			238 × 85 × 75 mm (10.96 × 3.33 × 2.96")		
WEIGHT	0.66 kg (1.45 lb)			0.70 kg (1.55 lb)		

PART NO.	MODEL
431-0020-04-00S	TS-X PRO 320, PAL, 9Hz, Monocular (No Lens)
431-0021-04-00S	TS-XR PRO 640, PAL, 9Hz, Monocular (No Lens)
431-0020-03-00S	TS-X PRO 320, NTSC, 9Hz, Monocular (No Lens)
431-0021-03-00S	TS-XR PRO 640, NTSC, 9Hz, Monocular (No Lens)
ACCESSORIES	
322-0181-12	QD35 - 35 mm Quick Disconnect Lens (Ht. - 2.2", Dia - 3.1")
322-0195-12	QD65 - 65 mm Quick Disconnect Lens (Ht. - 3.3", Dia - 3.1")
322-0196-12	QD100 - 100 mm Quick Disconnect Lens (Ht. - 4.6", Dia - 3.1")
4115397	Tactical Carrying Pouch
4142126	Hard Shell Case Black; TS and HS X/XR Series for Body and Lens
4119354	Hard shell Pelican case for TS and TS Series, black
4115395	Lens Cover Flip Cap, 19 mm; TS24/32 and HS-324 Series
4115401	Hot Shoe, Charging/Video Out
261-1021-00	Eye cup - monocular, sealed
4131079	AC Charger (Power Cable) TS and HS Series
4115975	USB Cable, standard, TS Series
4115972	RCA Video Output Cable, HS & TS Series



FLIR *HS-X*

Thermal Imaging Monocular

The HS-Series handheld thermal imaging camera lets law enforcement officers see clearly in total darkness, giving them the information they need while making quick decisions, enhancing mission effectiveness, maximizing operational capabilities, and improving officer safety.

The HS-Series camera utilizes a FLIR-developed imaging core giving excellent, high-fidelity thermal imagery with the detail necessary for cutting edge performance. You will see improved detection and recognition ranges in total darkness, as well as through smoke, dust, and light fog.

You can see better through camouflage and foliage in any lighting conditions. Because HS-Series cameras see heat, not light, they are not fooled by suspects wearing dark clothes or hiding in bushes.

You can see more – and see farther – than with other night vision technologies because HS-Series cameras see clearly without any light whatsoever. You can see farther at night than with technologies that need ambient light to work and you can see heat sources that these other cameras could never find.

The HS-Series is available with a stand-alone body that accepts interchangeable 35, 65, and 100 mm lenses.

- Multiple lens options
- Handheld thermal night vision
- Color LCD viewfinder display
- Simplified push-button operation
- Shuttered eyepiece
- Four rechargeable AA NiMH batteries

FLIR *HS-XR*

Thermal Imaging Monocular

SPECS	HS-X			HS-XR		
DETECTOR	320 × 240			640 × 480		
LENS (OPTIONAL)	35 mm	65 mm	100 mm	35 mm	65 mm	100 mm
FIELD OF VIEW	13° × 10°	7° × 5°	5° × 3°	18° × 13°	10° × 8°	6° × 4°
ZOOM	2x, 4x			2x, 4x, 8x		
REFRESH RATE	9 or 30 Hz			9 or 30 Hz		
VIDEO CAPABLE	Video Out / SD Card			Video Out / SD Card		
DIMENSIONS	238 × 85 × 67 mm (9.36 × 3.33 × 2.62")			238 × 85 × 75 mm (10.96 × 3.33 × 2.96")		
WEIGHT	0.66 kg (1.45 lb)			0.70 kg (1.55 lb)		

PART NO.	MODEL
431-0020-02-00S	HS-X 320, PAL, 9Hz, Monocular (No Lens)
431-0020-02-00	HS-X 320, PAL, 30Hz, Monocular (No Lens)
431-0021-02-00S	HS-XR 640, PAL, 9Hz, Monocular (No Lens)
431-0021-02-00	HS-XR 640, PAL, 30Hz, Monocular (No Lens)
431-0020-01-00S	HS-X 320, NTSC, 9Hz, Monocular (No Lens)
431-0020-01-00	HS-X 320, NTSC, 30Hz, Monocular (No Lens)
431-0021-01-00S	HS-XR 640, NTSC, 9Hz, Monocular (No Lens)
431-0021-01-00	HS-XR 640, NTSC, 30Hz, Monocular (No Lens)
ACCESSORIES	
322-0181-12	QD35 - 35 mm Quick Disconnect Lens (Ht. - 2.2", Dia - 3.1") for HS-X Series
322-0195-12	QD65 - 65 mm Quick Disconnect Lens (Ht. - 3.3", Dia - 3.1") for HS-X Series
322-0196-12	QD100 - 100 mm Quick Disconnect Lens (Ht. - 4.6", Dia - 3.1") for HS-X Series
4115397	Tactical Carrying Pouch
4142126	Hard Shell Case Black; TS and HS X/XR Series for Body and Lens
4119354	Hard shell Pelican case for TS and TS Series, black
4115395	Lens Cover Flip Cap, 19 mm; TS24/32 and HS-324 Series
433-0000-00-50	Upgrade of HS & TS Series Non-Pro to Pro
4115401	Hot Shoe, Charging/Video Out
4131079	AC Charger (Power Cable) TS and HS Series
4115972	RCA Video Output Cable, HS & TS Series



FLIR COMMAND C

Thermal Imaging Monocular

The Command C is a solid state, uncooled, long-wave infrared, magnified, dedicated handheld thermal imager intended for day and night engagements. The thermal imaging technology allows you to detect targets by cutting through snow, dust, smoke, fog, haze, and other atmospheric obscuring. The Command C demonstrates its operational flexibility for all mission applications.

Its proprietary hyper-image processing (HIP) gives the Command C a robust library of software features to tailor the image to the needs of the mission. Plus, the operator can record video using the Digital Video Recorder (DVR) or augment the battery life by attaching to external battery options.

- Rugged, fiberglass reinforced construction
- 640x480 color LED display
- Simple 3-button control
- Color & monochrome palettes
- Extended operation time with optional external battery power supply

SPECS	COMMAND C 336 2-8X25	COMMAND C 640 1-8X25	COMMAND MINI 320	COMMAND MINI 640
DETECTOR	336 × 256	640 × 512	320 × 256	640 × 512
LENS	25 mm; F/1.0	25 mm; F/1.0	19 mm; F/1.0	19 mm; F/1.0
FIELD OF VIEW	13° × 10°	25° × 20°	12° × 9.5°	23° × 18.5°
ZOOM	2x, 4x	2x, 4x, 8x	2x, 4x	2x, 4x, 8x
REFRESH RATE	9 or 30 or 60 Hz	30 Hz	30 Hz	30 Hz
VIDEO CAPABLE	Video Out		Video Capture / Video Out	
DIMENSIONS	150 × 90 × 52 mm (5.9 × 3.5 × 2.0")		144 × 69 × 44 mm (5.7 × 2.7 × 1.7")	
WEIGHT	0.4 kg (0.88 lb)		0.22 kg (0.49 lb)	

FLIR COMMAND MINI

Thermal Imaging Monocular

FLIR is proud to introduce the Command Mini Longwave Infrared Thermal Imaging Monocular - the latest step in our never-ceasing quest to reduce size and weight while maximizing power and functionality of the latest FLIR Boson core. The Command Mini's remarkably compact size ensures that it can be concealed in a pocket, and its featherweight mass of 220g makes it the lightest thermal monocular currently available.

- High resolution FLCOS display
- Drop-down menu and icon based menu
- Simple, intuitive 3-button control
- Digital Zoom up to 8x
- Integrated digital compass and digital inclinometer
- Rugged, fiberglass reinforced construction
- Color & monochrome palettes

PART NO.	MODEL
TAT179MN2PROC21	Command C 336 2-8x25 (9 Hz)
TAT173MN2PROC21	Command C 336 2-8x25 (30 Hz)
TAT176MN2PROC21	Command C 336 2-8x25 (60 Hz)
TAT163MN2PROC11	Command C 640 1-8x25 (30 Hz)
TAB179MN8PMIN11	Command Mini 320 (9 Hz)
TAB173MN8PMIN11	Command Mini 320 (30 Hz)
TAB163MN9PMIN11	Command Mini 640 (30 Hz)
ACCESSORIES	
ANAMTM0003	Tripod with a Grip (for Command C)
ANHCO00001	Hard Shipping/ Storage Case #101



FLIR COMMAND MCR®

Thermal Imaging Monocular

Command MCR/ Command MR brings the latest, most technologically advanced thermal imaging technology to the sporting and, law enforcement markets. The Command MCR/ Command MR product line is available in a variety of models – each optimizing performance, price, and state-of-the-art technology for myriad uses and mission types. A solid state, uncooled LWIR handheld thermal imager built for day and night engagements, 24/7 mission capability is only one of the strengths of Command MCR/ Command MR. Unlike other devices requiring near-infrared illumination to augment Night Vision equipment, the Command MCR/ Command MR thermal imager is a passive sensor, emitting no visible light or RF energy, which makes it extremely difficult to detect with other devices.

- High resolution FLCOS display
- Rapid start-up
- Drop-down menu
- Aircraft-aluminum alloy construction
- Integrated digital compass and digital inclinometer
- Onboard video recording and picture capture (Internal Storage)

FLIR COMMAND MR®

Thermal Imaging Monocular

SPECS	COMMAND MCR 320 1.5-6X25	COMMAND MCR 640 1-8X25	COMMAND MR 320 4-16X50	COMMAND MR 640 2-16X50
DETECTOR	320 × 256	640 × 512	320 × 256	640 × 512
LENS	25 mm; F/1.0		50 mm; F/1.0	
FIELD OF VIEW	9° × 7°	18° × 14°	4.5° × 3.5°	9° × 7°
ZOOM	2x, 4x	2x, 4x, 8x	2x, 4x	2x, 4x, 8x
REFRESH RATE	30 Hz		30 Hz	
VIDEO CAPABLE	Video Capture / Video Out		Video Capture / Video Out	
DIMENSIONS	212 × 65 × 68 mm (8.4 × 2.6 × 2.7")		241 × 65 × 68 mm (9.5 × 2.6 × 2.7")	
WEIGHT	0.5 kg (1.1 lb)		0.65 kg (1.44 lb)	

PART NO.	MODEL
TAB179MN2PCR021	Command MCR 320 1.5-6x25 (9 Hz)
TAB173MN2PCR021	Command MCR 320 1.5-6x25 (30 Hz)
TAB163MN2PCR011	Command MCR 640 1-8x25 (30 Hz)
TAB179MN5PMR041	Command MR 320 4-16x50 (9 Hz)
TAB173MN5PMR041	Command MR 320 4-16x50 (30 Hz)
TAB163MN5PMR021	Command MR 640 2-16x50 (30 Hz)
ACCESSORIES	
IALA0AMRF2200B1	AMRF2200B - Advanced Modular (Laser) Range Finder for Thermal (Boson based) devices
ANAMTM0003	Tripod with a Grip
ANHCO00001	Hard Shipping/ Storage Case #101



FLIR COMMAND MLR™

Thermal Imaging Monocular

The Command MLR/ Command MXL family of thermal imaging monoculars with 75 or 100 mm lenses was developed for long-range observation. With simple, intuitive controls, Command MLR/ Command MXL gives you rapid access to 2x, 4x, and 8x digital zoom, easy to navigate drop-down menus, and FLIR's class-leading image processing so you get the most out of your thermal imager in any conditions.

With a rugged construction, built out of CNC-machined aluminum alloy, Command MLR/ Command MXL can stand up to the daily abuse of tough missions. The integrated Digital Magnetic Compass and Digital Inclinometer give you the added intelligence you need when operating at night. The Command MLR/ Command MXL also can record imagery on-board and are equipped with video-out capabilities.

The Command MLR/ Command MXL backs up its claims with a limited 3-year warranty and a full 10-year warranty on the infrared detector. All this, and the peace of mind that comes from knowing it was made in the USA.

- CNC machined aircraft-aluminum alloy construction
- Easy and intuitive Drop-down user interface
- High resolution FLCOS display
- Onboard video recording and picture capture (Internal Storage)
- Rapid start-up
- Integrated digital compass, digital inclinometer

FLIR COMMAND MXL™

Thermal Imaging Monocular

SPECS	COMMAND MLR 320 6-24X75	COMMAND MLR 640 3-24X75	COMMAND MXL 320 8-32X100	COMMAND MXL 640 4-32X100
DETECTOR	320 × 256	640 × 512	320 × 256	640 × 512
LENS	75 mm; F/1.0		100 mm; F/1.0	
FIELD OF VIEW	3° × 2.5°	6° × 4.7°	2.2° × 1.8°	4.5° × 3.5°
ZOOM	2x, 4x	2x, 4x, 8x	2x, 4x	2x, 4x, 8x
REFRESH RATE	30 Hz		30 Hz	
VIDEO CAPABLE	Video Capture / Video Out		Video Capture / Video Out	
DIMENSIONS	265 × 89 × 89 mm (10.4 × 3.5 × 3.5")		292 × 116 × 116 mm (11.5 × 4.6 × 4.6")	
WEIGHT	0.82 kg (1.8 lb)		1.15 kg (2.54 lb)	

PART NO.	MODEL
TAB179MN7PLR061	Command MLR 320 6-24x75 (9 Hz)
TAB173MN7PLR061	Command MLR 320 6-24x75 (30 Hz)
TAB163MN7PLR031	Command MLR 640 3-24x75 (30 Hz)
TAB179MN1PXL81	Command MXL 320 8-32x100 (9 Hz)
TAB173MN1PXL81	Command MXL 320 8-32x100 (30 Hz)
TAB163MN1PXL81	Command MXL 640 4-32x100 (30 Hz)
ACCESSORIES	
IALA0AMRF2200B1	AMRF2200B - Advanced Modular (Laser) Range Finder for Thermal (Boson based) devices
ANAMTM0003	Tripod with a Grip
ANHC000001	Hard Shipping/ Storage Case #101



FLIR **COMMAND MR PRO**

Thermal Imaging Monocular

The Command MR Pro/ Command MXL Pro is a high-performance, handheld thermal monocular that can withstand immersion in water up to 20 meters and absorb the most brutal environmental shocks. Putting the most advanced system available on the market today in the palm of your hand, it includes options like an electronic compass and inclinometer. Available in two thermal resolutions, Command MR Pro/ Command MXL Pro gives users a choice between 50 or 100 mm lens options, creating a wide variety of optical magnifications and range performance capabilities. It also includes a unique dual battery option, so operators can use either four 3.0VDC 123A batteries or four 1.5VDC AA batteries pre-loaded in a cartridge.

- Operates on 123A or AA batteries
- SVGA 800x600 OLED Display
- Digital Compass and Digital Inclinometer
- Wireless 5-button Remote

SPECS	COMMAND MR PRO 336 4-16X50	COMMAND MXL PRO 336 8-32X100	COMMAND MR PRO 640 2-16X50	COMMAND MXL PRO 640 4-32X100
DETECTOR	336 × 256		640 × 512	
LENS	50 mm; F/1.4	100 mm; F/1.4	50 mm; F/1.4	100 mm; F/1.4
FIELD OF VIEW	6.5° × 5°	3.3° × 2.5°	12.5° × 10°	6.2° × 5°
ZOOM	2x, 4x	2x, 4x	2x, 4x, 8x	2x, 4x, 8x
REFRESH RATE	30 or 60 Hz	30 or 60 Hz	30 Hz	30 Hz
VIDEO CAPABLE	Video Out			
DIMENSIONS	197 × 76 × 76 mm (7.5 × 3.0 × 3.0")	265 × 90 × 100 mm (10.4 × 3.5 × 3.9")	197 × 76 × 76 mm (7.5 × 3.0 × 3.0")	265 × 90 × 100 mm (10.4 × 3.5 × 3.9")
WEIGHT	0.8 kg (1.8 lb)	1.15 kg (2.54 lb)	0.8 kg (1.8 lb)	1.15 kg (2.54 lb)

FLIR **COMMAND MXL PRO**

Thermal Imaging Monocular

PART NO.	MODEL
TAT173MN5PPRO41	Command MR Pro 336 (30 Hz) FLIR Tau 2 - 336x256 (17µm) 30Hz Core, 50 mm Lens
TAT176MN5PPRO41	Command MR Pro 336 (60 Hz) FLIR Tau 2 - 336x256 (17µm) 60Hz Core, 50 mm Lens
TAT173MN1PPRO81	Command MXL Pro 336 (30 Hz) FLIR Tau 2 - 336x256 (17µm) 30Hz Core, 100 mm Lens
TAT176MN1PPRO81	Command MXL Pro 336 (60 Hz) FLIR Tau 2 - 336x256 (17µm) 60Hz Core, 100 mm Lens
TAT163MN5PPRO21	Command MR Pro 640 (30 Hz) FLIR Tau 2 - 640x512 (17µm) 30Hz Core, 50 mm Lens
TAT166MN5PPRO21	Command MR Pro 640 (60 Hz) FLIR Tau 2 - 640x512 (17µm) 60Hz Core, 50 mm Lens
TAT163MN1PPRO41	Command MXL Pro 640 (30 Hz) FLIR Tau 2 - 640x512 (17µm) 30Hz Core, 100 mm Lens
TAT166MN1PPRO41	Command MXL Pro 640 (60 Hz) FLIR Tau 2 - 640x512 (17µm) 60Hz Core, 100 mm Lens
ACCESSORIES	
ATVR000002	IRIS Wireless Head Mounted Display
IALA00AMRF22001	AMRF2200 - Advanced Modular (Laser) Range Finder
ATAM000005	HD DVR - High-Definition Digital Recorder
ATAM000008	Extended Battery Pack - Extended Battery Pack with Rechargeable Batteries
ANAMTM0003	Tripod with a Grip
ANHCO00001	Hard Shipping/ Storage Case #101



FLIR Q14-B***Multifunction Thermal Monocular**

The Q14-B Longwave Infrared (LWIR) Multifunctional Thermal Imaging Monocular (LIMTIM) packs class-leading performance and features into a small package. Its compact size means it can be concealed in a shirt pocket, and it's the lightest full-featured thermal monocular currently on the market. The Q14-B also has two integral rail mounts so you won't have to take the head/ helmet mount interface off in order to mount the unit on a weapon as a stand-alone short-range weapon sight. The mini-rail design allows for mounting on a wide variety of in-service head mounts, helmet mounts, reflex cameras, digital video recorders, and a MIL-STD-1913 weapon rail systems using the optional quick-release interfaces. Equipped with digital compass and inclinometer, the Q14-B LIMTIM offers the operator the tools necessary to interpolate accurate distance to target and target orientation.

- High resolution FLCOS display
- Drop-down menu and icon based menu
- Simple, intuitive 3-button control
- Digital Zoom up to 8x
- Integrated digital compass and digital inclinometer
- Easy adaptability to wide selection of head, helmet, and weapon mounts with QuickRail/ Dove Tail/ Bayonet interfaces
- Onboard video recording and picture capture (Internal Storage)

SPECS	Q14-B TIM 320	Q14-B TIM 640
DETECTOR	320 × 256	640 × 512
LENS	19 mm; F/1.0	
FIELD OF VIEW	12° × 9.5°	23° × 18.5°
ZOOM	2x, 4x	2x, 4x, 8x
REFRESH RATE	30 Hz	
VIDEO CAPABLE	Video Capture / Video Out	
DIMENSIONS	144 × 72 × 49 mm (5.7 × 2.8 × 1.9")	
WEIGHT	0.23 kg (0.5 lb)	

PART NO.	MODEL
TAB173WN8Q14001	Q14-B TIM 320 (30Hz)
TAB163WN9Q14001	Q14-B TIM 640 (30Hz)
ACCESSORIES	
ANHG000001	Goggle Kit #1
ANHM000002	Helmet Mount #3 (MICH/PASGT)
ANHM000170	Helmet Mount #170 (Shroud)
ANHG000002	Swing Arm #37 - Mini Rail Adapter to Bayonet Mount
ANHM000172	Swing Arm #172 - Mini Rail to Dovetail Adapter
ANAM000004	QRM - Quick-Release Weapon Mount #26/ #142
ANHC000001	Hard Shipping/ Storage Case #101



FLIR **BTS-X PRO**

Thermal Imaging Bi-Ocular

FLIR **BTS-XR PRO**

Thermal Imaging Bi-Ocular

FLIR's new Scout BTS-Series gives outdoor enthusiasts even more choices and control in their thermal viewing experience. Featuring a full coverage eyepiece, inter-ocular adjustment, straightforward controls, interchangeable quick disconnect lenses, and the unrivaled performance that only FLIR's high resolution thermal cores can deliver, the Scout Bi-Ocular is a must have for any avid outdoor enthusiast. Keep track of your party, see animals, track game, and travel safely at night or in conditions with poor visibility. Employing either a 320x240 or 640x480 resolution thermal imager, the Scout Bi-Ocular allows you to see more and see farther than any other night vision technology.

The BTS-Series is available with a stand-alone body that accepts interchangeable 35, 65, and 100 mm lenses

- Quick Connect Hot Shoe
- SD card slot
- One-touch recording
- USB 2.0 connection
- Replaceable (AA) batteries
- Rugged design
- Hard carrying case

SPECS	BTS-X PRO			BTS-XR PRO		
DETECTOR	320 × 240			640 × 480		
LENS (OPTIONAL)	35 mm	65 mm	100 mm	35 mm	65 mm	100 mm
FIELD OF VIEW	13° × 10°	7° × 5°	5° × 3°	18° × 13°	10° × 8°	6° × 4°
ZOOM	2x			2x, 4x		
REFRESH RATE	9 Hz			9 Hz		
VIDEO CAPABLE	Video Out / SD Card			Video Out / SD Card		
DIMENSIONS	280 × 165 × 67 mm (11.0 × 6.5 × 2.63")					
WEIGHT	1 kg (2.2 lb)					

PART NO.	MODEL
431-0005-06-00S	BTS-X PRO - 320, 9Hz, PAL, Bi-Ocular (No Lens)
431-0006-06-00S	BTS-XR PRO - 640, 9Hz, PAL, Bi-Ocular (No Lens)
431-0005-05-00S	BTS-X PRO - 320 < 9Hz, NTSC, Bi-Ocular (No Lens)
431-0006-05-00S	BTS-XR PRO - 640 < 9Hz, NTSC, Bi-Ocular (No Lens)
ACCESSORIES	
322-0181-12	QD35 - 35 mm Quick Disconnect Lens (Ht. - 2.2", Dia - 3.1")
322-0195-12	QD65 - 65 mm Quick Disconnect Lens (Ht. - 3.3", Dia - 3.1")
322-0196-12	QD100 - 100 mm Quick Disconnect Lens (Ht. - 4.6", Dia - 3.1")
4125400	Hard Carrying Case
4125401	Tactical Pouch; BHS / BTS Series
4129110	Eye Cup; BHS / BTS Series
4129111	Lens Cap; BHS / BTS Series
4129112	Hot Shoe; BHS / BTS Series



FLIR BHS-X*

Thermal Imaging Bi-Ocular

FLIR BHS-XR*

Thermal Imaging Bi-Ocular

The new FLIR BHS-Series Bi-Ocular camera gives law enforcement officers the ability to see more and see farther in infrared than with other low-light night vision goggles. Featuring a full coverage eyepiece, inter-ocular adjustment, ergonomic comfort, straightforward controls, and the rivaled performance that only FLIR can deliver, the FLIR BHS-Series Bi-Ocular is a must-have for extended patrols, covert surveillance, critical infrastructure protection, and high-threat security missions. The BHS-Series is available with a stand-alone body that accepts interchangeable 35, 65, and 100 mm lenses.

- Choose from interchangeable 35 mm, 65 mm, or 100 mm quick-disconnect lenses (purchased separately)
- SD Card Slot
- Standard Photo & Video Capture
- Four rechargeable AA NiMH batteries
- Rugged design
- Hard Carrying Case

SPECS	BHS-X			BHS-XR		
DETECTOR	320 × 240			640 × 480		
LENS (OPTIONAL)	35 mm	65 mm	100 mm	35 mm	65 mm	100 mm
FIELD OF VIEW	13° × 10°	7° × 5°	5° × 3°	18° × 13°	10° × 8°	6° × 4°
ZOOM	2x			2x, 4x		
REFRESH RATE	9 or 30 Hz			9 or 30 Hz		
VIDEO CAPABLE	Video Out / SD Card			Video Out / SD Card		
DIMENSIONS	280 × 165 × 67 mm (11.0 × 6.5 × 2.63")					
WEIGHT	1 kg (2.2 lb)					

PART NO.	MODEL
431-0005-02-00	BHS-X Bi-Ocular (320x240) No Lens: PAL, 30Hz
431-0005-02-00S	BHS-X Bi-Ocular (320x240) No Lens: PAL, 9Hz
431-0006-02-00	BHS-XR Bi-Ocular (640x480) No Lens: PAL, 30Hz
431-0006-02-00S	BHS-XR Bi-Ocular (640x480) No Lens: PAL, 9Hz
431-0005-01-00	BHS-X Bi-Ocular (320x240) No Lens: NTSC 30 Hz
431-0005-01-00S	BHS-X Bi-Ocular (320x240) No Lens: NTSC <9 Hz
431-0006-01-00	BHS-XR Bi-Ocular (640x480) No Lens: NTSC 30 Hz
431-0006-01-00S	BHS-XR Bi-Ocular (640x480) No Lens: NTSC 9 Hz
ACCESSORIES	
322-0181-12	QD35 - 35 mm Quick Disconnect Lens (Ht. - 2.2", Dia - 3.1")
322-0195-12	QD65 - 65 mm Quick Disconnect Lens (Ht. - 3.3", Dia - 3.1")
322-0196-12	QD100 - 100 mm Quick Disconnect Lens (Ht. - 4.6", Dia - 3.1")
4125400	Hard Carrying Case
4129110	Eye Cup; BHS / BTS Series
4129111	Lens Cap; BHS / BTS Series
4129112	Hot Shoe; BHS / BTS Series



FLIR **COMMAND BMR**

Thermal Imaging Bi-Ocular

The Command BMR line is the latest and most technologically advanced family of LWIR thermal imaging bi-oculars on the market today. Bi-ocular design is better for sustained viewing periods and improved depth perception. The Command BMR line includes a variety of different models, each optimizing performance, price, and state-of-the-art technology for a variety of uses and mission applications. It is a solid state, uncooled, LWIR handheld thermal imager that excels at both day and nighttime missions.

- High resolution FLCOS display
- Rapid start-up
- Drop-down menu
- Aircraft-aluminum alloy construction
- Integrated digital compass and digital inclinometer
- Onboard video recording and picture capture (Internal Storage)

SPECS	COMMAND BMR 320 4-16X50	COMMAND BMR 640 2-16X50
DETECTOR	320 × 256	640 × 512
LENS	50 mm; F/1.0	50 mm; F/1.0
FIELD OF VIEW	4.5° × 3.5°	9° × 7°
ZOOM	2x, 4x	2x, 4x, 8x
REFRESH RATE	30 Hz	
VIDEO CAPABLE	Video Capture / Video Out	
DIMENSIONS	281 × 65 × 128 mm (11.0 × 2.6 × 5.0")	
WEIGHT	0.92 kg (2.02 lb)	

PART NO.	MODEL
TAB179BN5HMR041	Command BMR 320 4-16x50 (9 Hz)
TAB173BN5HMR041	Command BMR 320 4-16x50 (30 Hz)
TAB163BN5HMR021	Command BMR 640 2-16x50 (30 Hz)
ACCESSORIES	
IALA0AMRF2200B1	AMRF2200B - Advanced Modular (Laser) Range Finder for Thermal (Boson based) devices
ANAMTM0003	Tripod with a Grip
ANHC000001	Hard Shipping/ Storage Case #101



FLIR COMMAND BLR™

Thermal Imaging Bi-Ocular

FLIR COMMAND BXL™

Thermal Imaging Bi-Ocular

The Command BLR/ Command BXL family of thermal imaging bi-oculars are available with either 320x256 or 640x512 resolution, and your choice of 75 or 100 mm lenses, so you're sure to find the configuration that's best for your mission. Its bi-ocular design makes viewing comfortable for long missions, and provides improved depth perception. The Command BLR/ Command BXL thermal imaging bi-oculars have simple but intuitive controls, functions, and features that are layered among direct button adjustments, direct combination button functions, and electronic menu selections. They can record imagery on-board and are equipped with video-out capabilities. All of these features combine to make Command BLR/ Command BXL one of the most sophisticated long-range observation devices on the market today.

- CNC machined aircraft-aluminum alloy construction
- Easy and intuitive Drop-down user interface
- High resolution FLCOS display
- Onboard video recording and picture capture (Internal Storage)
- Integrated digital compass, digital inclinometer

SPECS	COMMAND BLR 320 6-24X75	COMMAND BLR 640 3-24X75	COMMAND BXL 320 8-32X100	COMMAND BXL 640 4-32X100
DETECTOR	320 × 256	640 × 512	320 × 256	640 × 512
LENS	75 mm; F/1.0		100 mm; F/1.0	
FIELD OF VIEW	3° × 2.5°	6° × 4.7°	2.2° × 1.8°	4.5° × 3.5°
ZOOM	2x, 4x	2x, 4x, 8x	2x, 4x	2x, 4x, 8x
REFRESH RATE	30 Hz			
VIDEO CAPABLE	Video Capture / Video Out			
DIMENSIONS	305 × 89 × 128 mm (12.0 × 3.5 × 5.0")		332 × 116 × 128 mm (13.0 × 4.6 × 5.0")	
WEIGHT	1.07 kg (2.36 lb)		1.42 kg (3.12 lb)	

PART NO.	MODEL
TAB179BN7HLR061	Command BLR 320 6-24x75 (9 Hz)
TAB173BN7HLR061	Command BLR 320 6-24x75 (30 Hz)
TAB163BN7HLR031	Command BLR 640 3-24x75 (30 Hz)
TAB179BN1HXL81	Command BXL 320 8-32x100 (9 Hz)
TAB173BN1HXL81	Command BXL 320 8-32x100 (30 Hz)
TAB163BN1HXL81	Command BXL 640 4-32x100 (30 Hz)
ACCESSORIES	
IALA0AMRF2200B1	AMRF2200B - Advanced Modular (Laser) Range Finder for Thermal (Boson based) devices
ANAMTM0003	Tripod with a Grip
ANHCO00001	Hard Shipping/ Storage Case #101



FLIR **COMMAND BMR PRO**

Thermal Imaging Bi-Ocular

FLIR **COMMAND BXL PRO**

Thermal Imaging Bi-Ocular

The Command BMR Pro/ Command BXL Pro is a high performance handheld thermal bi-ocular. The bi-ocular design is better for sustained viewing periods and improved depth perception. The Command BMR Pro/ Command BXL Pro can withstand even the most brutal environmental shocks. The Command BMR Pro/ Command BXL Pro has some of the most advanced features on the market today, including options like an electronic compass and inclinometer. Utilizing the latest FLIR technology, the Command BMR Pro/ Command BXL Pro is offered in 336x256 or 640x512 resolutions. These options are further enhanced by professional, military-grade 50 or 100 mm lenses, creating a wide variety of optical magnifications and range performance capabilities. Command BMR Pro/ Command BXL Pro also has a unique dual battery option that consists of either four 3.0VDC 123A batteries or four 1.5VDC AA batteries pre-loaded in a cartridge.

- SVGA 800x600 OLED Display
- Digital Compass and Digital Inclinometer
- Wireless 5-button Remote
- Still Picture and Video Recording Capability (Mounted DVR Option)

SPECS	COMMAND BMR PRO 336 4-16X50	COMMAND BXL PRO 336 8-32X100	COMMAND BMR PRO 640 2-16X50	COMMAND BXL PRO 640 4-32X100
DETECTOR	336 × 256		640 × 512	
LENS	50 mm; F/1.4	100 mm; F/1.4	50 mm; F/1.4	100 mm; F/1.4
FIELD OF VIEW	6.5° × 5°	3.3° × 2.5°	12.5° × 10°	6.2° × 5°
ZOOM	2x, 4x		2x, 4x, 8x	
REFRESH RATE	30 or 60 Hz	30 or 60 Hz	30 Hz	30 Hz
VIDEO CAPABLE	Video Out			
DIMENSIONS	241 × 102 × 60 mm (9.5 × 4.0 × 2.4")	309 × 102 × 90 mm (12.1 × 4.0 × 3.5")	241 × 102 × 60 mm (9.5 × 4.0 × 2.4")	309 × 102 × 90 mm (12.1 × 4.0 × 3.5")
WEIGHT	1.05 kg (2.3 lb)	1.4 kg (3.1 lb)	1.05 kg (2.3 lb)	1.4 kg (3.1 lb)

PART NO.	MODEL
TAT173BN5HPR041	Command BMR Pro 336 (30 Hz) FLIR Tau 2 - 336x256 (17µm) 30Hz Core, 50 mm Lens
TAT176BN5HPR041	Command BMR Pro 336 (60 Hz) FLIR Tau 2 - 336x256 (17µm) 60Hz Core, 50 mm Lens
TAT173BN1HPR081	Command BXL Pro 336 (30 Hz) FLIR Tau 2 - 336x256 (17µm) 30Hz Core, 100 mm Lens
TAT176BN1HPR081	Command BXL Pro 336 (60 Hz) FLIR Tau 2 - 336x256 (17µm) 60Hz Core, 100 mm Lens
TAT163BN5HPR021	Command BMR Pro 640 (30 Hz) FLIR Tau 2 - 640x512 (17µm) 30Hz Core, 50 mm Lens
TAT166BN5HPR021	Command BMR Pro 640 (60 Hz) FLIR Tau 2 - 640x512 (17µm) 60Hz Core, 50 mm Lens
TAT163BN1HPR041	Command BXL Pro 640 (30 Hz) FLIR Tau 2 - 640x512 (17µm) 30Hz Core, 100 mm Lens
TAT166BN1HPR041	Command BXL Pro 640 (60 Hz) FLIR Tau 2 - 640x512 (17µm) 60Hz Core, 100 mm Lens
ACCESSORIES	
ATVR000002	IRIS Wireless Head Mounted Display
IALA00AMRF22001	AMRF2200 - Advanced Modular (Laser) Range Finder
ATAM000005	HD DVR - High-Definition Digital Recorder
ATAM000008	Extended Battery Pack - Extended Battery Pack with Rechargeable Batteries
ANAMTM0003	Tripod with a Grip
ANHCO00001	Hard Shipping/ Storage Case #101



FLIR THERMOSIGHT RS®

Thermal Imaging Riflescope

The FLIR Thermosight RS-Series thermal riflescope gives hunters and outdoor enthusiasts the ability to see clearly in total darkness, giving them the information they need while making quick decisions, maximizing operational capabilities, and improving safety.

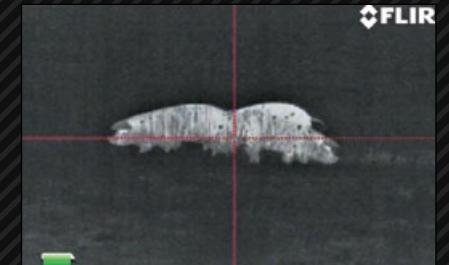
The Thermosight RS-Series camera uses Vanadium Oxide (VOx) microbolometer sensors to give excellent, high-fidelity thermal imagery with the detail necessary for cutting edge performance. You will detect and recognize animals at improved distances, in total darkness, as well as through smoke, dust, and light fog. The user can also see better through foliage and in uneven lighting conditions. Because Thermosight RS-Series cameras see heat, not light, the camera can find animals hiding in bushes.

You can see more – and see farther – than with other night vision technologies because Thermosight RS-Series cameras see clearly without any visible light whatsoever. You can see farther at night than with technologies that need ambient light to work and you can see heat sources that these other cameras could never find.

- Rugged design
- Wide range of models with various resolution and field of view choices
- Portable and Light Weight
- USB connection for battery charging, or for viewing video on an external monitor via the custom USB-to-RCA cable (not available with RS24 model)
- Rechargeable Internal Li-Ion battery

SPECS	RS24 1X	RS32 1.25-5X	RS32 2.25-9X	RS32 4-16X	RS64 1.1-9X	RS64 2-16X
DETECTOR	240 × 180	336 × 256		640 × 512		
LENS	13 mm	19 mm	35 mm	60 mm	35 mm	60 mm
FIELD OF VIEW	20°	16°	9°	5°	18°	10°
ZOOM	N/A	Up to 4x		Up to 8x		
REFRESH RATE	30 Hz	60 Hz	60 Hz	60 Hz	30 Hz	30 Hz
VIDEO CAPABLE	No	Yes				
DIMENSIONS	203 × 84 × 74 mm (8 × 3.3 × 2.9")		216 × 84 × 74 mm (8.5 × 3.3 × 2.9")		203 × 84 × 74 mm (8 × 3.3 × 2.9")	216 × 84 × 74 mm (8.5 × 3.3 × 2.9")
WEIGHT	0.8 kg (1.8 lb)		1.1 kg (2.4 lb)		0.8 kg (1.8 lb)	1.1 kg (2.4 lb)

PART NO.	MODEL
431-0017-01-00	Thermosight RS24, 30Hz, 1X - 13 mm, Direct View TWS
431-0017-02-00	Thermosight RS32, 60Hz, 1.25 - 5X - 19 mm, Direct View TWS
431-0017-03-00	Thermosight RS32, 60Hz, 2.25 - 9X - 35 mm, Direct View TWS
431-0017-04-00	Thermosight RS32, 60Hz, 4 - 16X - 60 mm, Direct View TWS
431-0017-05-00	Thermosight RS64, 30Hz, 1.1 - 9X - 35 mm, Direct View TWS
431-0017-06-00	Thermosight RS64, 30Hz, 2 - 16X, - 60 mm, Direct View TWS
ACCESSORIES	
4137962	Thermosight Stray light eye shield/cup
4137965	Thermosight Lens Cover, Front Objective
4137996	Thermosight Lens Cover, Rear Visible Optic
4137997	Thermosight Custom USB to Video out cable



FLIR**THERMOSIGHT RM**

Thermal Imaging Riflescope

The Thermosight RM Thermal Imaging Weapon Sight is intended for use on a variety of hunting and sporting weapons equipped with a Picatinny/Weaver rail. Displaying the thermal differences in the scene, the high-performance thermal imaging system of the Thermosight RM provides round-the-clock, all-weather detection and discrimination of heat-generating objects (such as animals), including those that are hidden. The Thermosight RM is effective at close and long ranges regardless of light and weather conditions, such as in total darkness or through smoke, haze, fog, and light rain.

Extremely reliable and versatile, the Thermosight RM is a highly useful, multifunctional addition to any security or hunting weapon platform.

- Light, compact, rugged, and uncompromising
- 6 onboard digitally controlled reticle patterns available: “Dot 4 MOA,” “Line Dot,” “Cross-Center Dot,” “Cross,” “Crosshair,” and “No Reticle”
- Onboard video recording and picture capture (Internal Storage)
- CNC machined aircraft-aluminum alloy construction
- Rapid start-up
- Integrated digital compass and digital inclinometer
- MIL-STD-1913 (Picatinny Rail) Quick Release Mount

SPECS	THERMOSIGHT RM 320 1.5-6X19	THERMOSIGHT RM 640 1-8X25
DETECTOR	320 × 256	640 × 512
LENS	19 mm; F/1.0	25 mm; F/1.0
FIELD OF VIEW	12° × 9.5°	18° × 14°
ZOOM	2x, 4x	2x, 4x, 8x
REFRESH RATE	30 Hz	
VIDEO CAPABLE	Video Capture / Video Out	
DIMENSIONS	220 × 84 × 68 mm (8.7 × 3.3 × 2.7")	230 × 84 × 68 mm (9.0 × 3.3 × 2.7")
WEIGHT	0.65 kg (1.44 lb)	0.65 kg (1.44 lb)

PART NO.	MODEL
TAB173WN9RX0011	Thermosight RM 320 1.5-6x19 (30 Hz)
TAB163WN2RX0011	Thermosight RM 640 1-8x25 (30 Hz)
ACCESSORIES	
IALA0AMRF2200B1	AMRF2200B - Advanced Modular (Laser) Range Finder for Thermal (Boson based) devices
ANHCO00001	Hard Shipping/ Storage Case #101



FLIR THERMOSIGHT RL[®]

Thermal Imaging Riflescope

The Thermosight RL/RX are solid state, uncooled, longwave infrared thermal weapon scopes optimized for both day and night engagements. Not only the smallest and lightest in their class, Thermosight RL/RX thermal weapon sights are packed with features while still being simple to operate. Installing the Thermosight RL/RX on a weapon is easy, repeatable, and reliable, thanks to its unique and user-friendly MIL-STD-1913/ Weaver/ Picatinny rail-compatible quick-release locking mechanism. The solid state technology and software algorithms, combined with a complementary color reticle platform, ensures maximum reticle contrast, high-level target accuracy, and boresight retention that cannot be achieved with mechanical boresight adjusters and traditional ballistic drums. This level of accuracy is translated into the electronic zoom (e-zoom) function of the Thermosight RL/RX thermal imaging weapon sight, which can be progressively increased from 1x to 2x, 4x, and 8x, without changing the point-of-aim to point of-impact relationship of the targeting reticle.

- Light, compact, rugged, and uncompromising
- 6 onboard digitally controlled reticle patterns available: "Dot 4 MOA," "Line Dot," "Cross-Center Dot," "Cross," "Crosshair," and "No Reticle"
- Onboard video recording and picture capture (Internal Storage)
- CNC machined aircraft-aluminum alloy construction
- Rapid start-up
- Integrated digital compass and digital inclinometer
- MIL-STD-1913 (Picatinny Rail) Quick Release Mount

FLIR THERMOSIGHT RX[®]

Thermal Imaging Riflescope

SPECS	THERMOSIGHT RL 320 4-16X50	THERMOSIGHT RL 640 2-16X50	THERMOSIGHT RX 320 6-24X75	THERMOSIGHT RX 640 3-24X75
DETECTOR	320 × 256	640 × 512	320 × 256	640 × 512
LENS	50 mm; F/1.0	50 mm; F/1.0	75 mm; F/1.0	75 mm; F/1.0
FIELD OF VIEW	4.5° × 3.5°	9° × 7°	3° × 2.5°	6° × 4.7°
ZOOM	2x, 4x	2x, 4x, 8x	2x, 4x	2x, 4x, 8x
REFRESH RATE	30 Hz			
VIDEO CAPABLE	Video Capture / Video Out			
DIMENSIONS	259 × 84 × 68 mm (10.2 × 3.3 × 2.7")		283 × 93 × 89 mm (11.1 × 3.7 × 3.5")	
DIMENSIONS	0.81 kg (1.78 lb)		0.97 kg (2.14 lb)	

PART NO.	MODEL
TAB173WN5RM0041	Thermosight RL 320 4-16x50 (30 Hz)
TAB163WN5RM0021	Thermosight RL 640 2-16x50 (30 Hz)
TAB173WN7RL0061	Thermosight RX 320 6-24x75 (30 Hz)
TAB163WN7RL0031	Thermosight RX 640 3-24x75 (30 Hz)
ACCESSORIES	
IALA0AMRF2200B1	AMRF2200B - Advanced Modular (Laser) Range Finder for Thermal (Boson based) devices
ANHCO00001	Hard Shipping/ Storage Case #101



FLIR THERMOSIGHT RM PRO[®]

Thermal Imaging Riflescope

The Thermosight RM Pro/ Thermosight RX Pro Thermal Weapon Sight has simple and intuitive controls, ballistic drop reticules, electronic compass, and digital inclinometer for finer range estimation and target orientation. It can also accept video-in imagery for those times when map or rangefinder display overlays are required, and external power for extended operations. Supported external devices include an optional laser range finder, external battery pack, multispectral laser and other accessories designed to attach on the scope's MIL-STD-1913 rail.

Solid state technology reticle adjustments and software algorithms, combined with a complementary color reticle platform, ensures maximum reticle contrast, high level target accuracy, and boresight retention. This level of accuracy is translated into the tracking electronic zoom (e-zoom) function, which can be progressively increased without changing the point-of-aim to point of-impact relationship of the targeting reticle.

- 24/7 Operation in presence of environmental obscurants (smoke, dust, haze, fog)
- Reliable quick-release locking weapon mount
- SVGA 800x600 OLED Display
- Digital Compass & Digital Inclinometer
- Tracking Digital e-Zoom: 2x / 4x / 8x (640 × 512 only)
- Still Picture and Video Recording Capability (Mounted DVR Option)

FLIR THERMOSIGHT RX PRO[®]

Thermal Imaging Riflescope

SPECS	THERMOSIGHT RM PRO 336 4-16X50	THERMOSIGHT RX PRO 336 8-32X100	THERMOSIGHT RM PRO 640 2-16X50	THERMOSIGHT RX PRO 640 4-32X100
DETECTOR	336 × 256		640 × 512	
LENS	50 mm; F/1.4	100 mm; F/1.4	50 mm; F/1.4	100 mm; F/1.4
FIELD OF VIEW	6.5° × 5°	3.3° × 2.5°	12.5° × 10°	6.2° × 5°
ZOOM	2x, 4x		2x, 4x, 8x	
REFRESH RATE	30 or 60 Hz	30 or 60 Hz	30 Hz	30 Hz
VIDEO CAPABLE	Video Out			
DIMENSIONS	197 × 76 × 76 mm (7.5 × 3.0 × 3.0")	265 × 90 × 100 mm (10.4 × 3.5 × 3.9")	197 × 76 × 76 mm (7.5 × 3.0 × 3.0")	265 × 90 × 100 mm (10.4 × 3.5 × 3.9")
WEIGHT	0.95 kg (2.0 lb)	1.3 kg (2.9 lb)	0.95 kg (2.0 lb)	1.3 kg (2.9 lb)

PART NO.	MODEL
TAT173WN5ZPRO41	Thermosight RM Pro 336 (30 Hz) FLIR Tau 2 - 336x256 (17µm) 30Hz Core, 50 mm Lens
TAT176WN5ZPRO41	Thermosight RM Pro 336 (60 Hz) FLIR Tau 2 - 336x256 (17µm) 60Hz Core, 50 mm Lens
TAT173WN1ZPRO81	Thermosight RX Pro 336 (30 Hz) FLIR Tau 2 - 336x256 (17µm) 30Hz Core, 100 mm Lens
TAT176WN1ZPRO81	Thermosight RX Pro 336 (60 Hz) FLIR Tau 2 - 336x256 (17µm) 60Hz Core, 100 mm Lens
TAT163WN5ZPRO21	Thermosight RM Pro 640 (30 Hz) FLIR Tau 2 - 640x512 (17µm) 30Hz Core, 50 mm Lens
TAT166WN5ZPRO21	Thermosight RM Pro 640 (60 Hz) FLIR Tau 2 - 640x512 (17µm) 60Hz Core, 50 mm Lens
TAT163WN1ZPRO41	Thermosight RX Pro 640 (30 Hz) FLIR Tau 2 - 640x512 (17µm) 30Hz Core, 100 mm Lens
TAT166WN1ZPRO41	Thermosight RX Pro 640 (60 Hz) FLIR Tau 2 - 640x512 (17µm) 60Hz Core, 100 mm Lens

ACCESSORIES

ATVR000002	IRIS Wireless Head Mounted Display
IALA00AMRF22001	AMRF2200 - Advanced Modular (Laser) Range Finder
ATAM000005	HD DVR - High-Definition Digital Recorder
ATAM000008	Extended Battery Pack - Extended Battery Pack with Rechargeable Batteries
ANHCO00001	Hard Shipping/ Storage Case #101



FLIR THERMOSIGHT C[®]**Thermal Imaging Clip-on System**

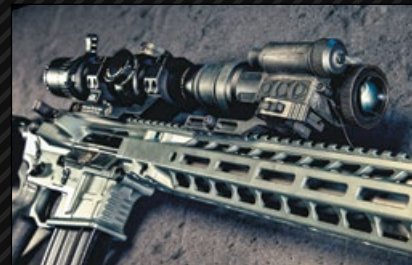
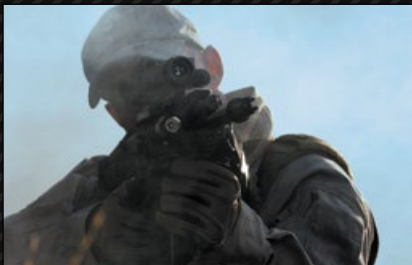
The Thermosight C is an uncooled longwave thermal clip-on device that mounts in front of an existing magnified day scope. This allows the day scope to be converted into a thermal weapon sight with no change in cheek weld, no change in trigger reach, and continued use of existing ballistic reticules in the day scope. Thermosight C simply mounts in front of your own standard daytime optical sight with factory bore-sighting to tolerances of less than 1 MOA, and there's no re-zeroing required. Because the operator uses their own familiar day scope, Thermosight C lets the shooter maintain the consistent eye relief and shooting position they're used to.

Equipped with digital compass and inclinometer, Thermosight C offers the operator the tools necessary to interpolate accurate distance to target and target orientation. Thermosight C can also be used as a stand-alone weapon sight and handheld uncooled thermal monocular. Its internal compass and inclinometer give Thermosight C finer range estimation and target orientation. A five-button wireless remote switch is included to operate and modify the settings on the Thermosight C to optimize the imagery for the viewed scene without having to remove your hands from the weapon.

- 24/7 Operation in presence of environmental obscurants (smoke, dust, haze, fog)
- High resolution FLCOS display
- Digital Compass & Digital Inclinometer
- Simple, intuitive 3-button control
- One CR123A battery operation
- Onboard video recording and picture capture (Internal Storage)

SPECS	THERMOSIGHT C 320	THERMOSIGHT C 640
DETECTOR	320 × 256	640 × 512
LENS	25 mm; F/1.0	25 mm; F/1.0
FIELD OF VIEW	9° × 7°	18° × 14°
ZOOM	2x, 4x	2x, 4x, 8x
REFRESH RATE	30 Hz	
VIDEO CAPABLE	Video Capture / Video Out	
DIMENSIONS	161 × 71 × 49 mm (6.3 × 2.8 × 1.9")	114 × 67 × 49 mm (4.5 × 2.6 × 1.9")
WEIGHT	0.46 kg (1.0 lb)	0.23 kg (0.5 lb)

PART NO.	MODEL
TAB173CN2C00011	Thermosight C 320 (30Hz)
TAB163CN2C00011	Thermosight C 640 (30Hz)
ACCESSORIES	
IALA0AMRF2200B1	AMRF2200B - Advanced Modular (Laser) Range Finder for Thermal (Boson based) devices
ANAM000031	Weaver Mount #60 replaces QRM to weaver base for IR Illuminator
ANAM000045	Extended Rail Adapter #85 - Dovetail Weaver Picatinny Rail Adapter (extends scope base)
ANHC000001	Hard Shipping/ Storage Case #101



FLIR THERMOSIGHT CM[®]

Thermal Imaging Clip-on System

The Thermosight CM/CL is an uncooled longwave thermal clip-on device that mounts in front of an existing magnified day sight. This allows the day scope to be converted into a thermal weapon sight with no change in cheek weld, no change in trigger reach, and continued use of existing ballistic reticules in the day scope. Thermosight CM/CL simply mounts in front of your own standard daytime optical sight with factory bore-sighting to tolerances of less than 1 MOA, and there's no re-zeroing required. It allows the user to maintain consistent eye relief and shooting position because the operator uses their own, familiar day scope.

Equipped with digital compass and inclinometer, Thermosight CM/CL offers the operator the tools necessary to interpolate accurate distance to target and target orientation. Thermosight CM/CL can also be used as a stand-alone weapon sight and handheld uncooled thermal monocular. Its internal compass and inclinometer give Thermosight CM/CL finer range estimation and target orientation. A five-button wireless remote switch is included to operate and modify the settings on the Thermosight CM/CL to optimize the imagery for the viewed scene without having to remove your hands from the weapon.

Installing Thermosight CM/CL on a weapon is easy, repeatable, and reliable based on a unique and highly user-friendly MIL-STD-1913/Weaver/Picatinny rail compatible, quick-release locking mechanism.

- Simple and quick conversion of daytime scope to thermal imaging
- Mounts in front of any daytime scope, no re-zeroing required
- High resolution FLCOS display
- Onboard video recording and picture capture (Internal Storage)
- CNC machined aircraft-aluminum alloy construction
- MIL-STD-1913 (Picatinny Rail) Quick Release Mount
- Integrated digital compass and digital inclinometer

FLIR THERMOSIGHT CL[®]

Thermal Imaging Clip-on System

SPECS	THERMOSIGHT CM 320	THERMOSIGHT CM 640	THERMOSIGHT CL 640
DETECTOR	320 × 256	640 × 512	
LENS	50 mm; F/1.0	50 mm; F/1.0	75 mm; F/1.0
FIELD OF VIEW	4.5° × 3.5°	9° × 7°	6° × 4.7°
ZOOM	1x		
REFRESH RATE	30 Hz		
VIDEO CAPABLE	Video Capture / Video Out		
DIMENSIONS	221 × 82 × 68 mm (8.7 × 3.2 × 2.7")	208 × 82 × 68 mm (8.2 × 3.2 × 2.7")	257 × 93 × 89 mm (10.1 × 3.7 × 3.5")
WEIGHT	0.84 kg (1.8 lb)	0.84 kg (1.8 lb)	0.98 kg (2.2 lb)

PART NO.	MODEL
TAB173CN5CM0011	Thermosight CM 320 (30 Hz)
TAB163CN5CM0011	Thermosight CM 640 (30 Hz)
TAB163CN7CM0011	Thermosight CL 640 (30 Hz)
ACCESSORIES	
IALA0AMRF2200B1	AMRF2200B - Advanced Modular (Laser) Range Finder for Thermal (Boson based) devices
ANAM000031	Weaver Mount #60 replaces QRM to weaver base for IR Illuminator
ANAM000045	Extended Rail Adapter #85 - Dovetail Weaver Picatinny Rail Adapter (extends scope base)
ANH000001	Hard Shipping/ Storage Case #101



FLIR THERMOSIGHT CM PRO[®]

Thermal Imaging Clip-on System

The Thermosight CM Pro/ Thermosight CL Pro family of clip-on thermal imaging devices showcase the latest advancements in the field of uncooled thermal imaging technology for the dismounted soldier, special law enforcement team member, and professional hunter. Built around common core electronics, signal processing, and infinity focused large-format collimating eyepiece, the Thermosight CM Pro/ Thermosight CL Pro Series day/night clip-on thermal imager is available in a variety of options and price points that cater to every application – military and commercial.

An uncooled longwave infrared imager, Thermosight CM Pro/ Thermosight CL Pro mounts in front of the variable magnification sniper day sight without the need to remove the day sight from the weapon. It can also be used as a stand-alone weapon sight and handheld uncooled thermal monocular and it includes a built-in compass and inclinometer for finer range estimation and target orientation. Its unique dual battery option lets Thermosight CM Pro/ Thermosight CL Pro run on either of four 3.0VDC 123A batteries, or four 1.5VDC AA batteries pre-loaded in a cartridge. In a pinch, the Thermosight Pro special power-management feature allows the use of a single 3.0VDC 123A battery for just over an hour.

Based on its superior price-to-performance value, the Thermosight CM Pro/ Thermosight CL Pro clip-on thermal imaging device represents the most versatile and sophisticated sight available in today's market for hunters, SWAT teams, and military personnel who want to use their own sniper day scopes.

- 24/7 Operation in presence of environmental obscurants (smoke, dust, haze, fog)
- Operates on 123A or AA batteries
- SVGA 800 × 600 OLED Display
- Digital Compass & Digital Inclinometer
- Tracking Digital e-Zoom: 2x / 4x / 8x (640 × 512 only)
- Onboard video recording and picture capture (Internal Storage)

FLIR THERMOSIGHT CL PRO[®]

Thermal Imaging Clip-on System

SPECS	THERMOSIGHT CM PRO 336	THERMOSIGHT CM PRO 640	THERMOSIGHT CL PRO 640
DETECTOR	336 × 256	640 × 512	
LENS	50 mm; F/1.4	50 mm; F/1.4	100 mm; F/1.4
FIELD OF VIEW	6.6° × 5°	12.5° × 10°	6.2° × 5°
ZOOM	2x, 4x	2x, 4x, 8x	2x, 4x, 8x
REFRESH RATE	30 or 60 Hz	30 Hz	30 Hz
VIDEO CAPABLE	Video Out		
DIMENSIONS	217 × 76 × 76 mm (8.5 × 3.0 × 3.0")	217 × 76 × 76 mm (8.5 × 3.0 × 3.0")	287 × 90 × 100 mm (11.3 × 3.5 × 3.9")
WEIGHT	0.72 kg (1.6 lb)	0.72 kg (1.6 lb)	1.28 kg (2.8 lb)

PART NO.	MODEL
TAT173CN5APMR01	Thermosight CM Pro 336 (30 Hz) FLIR Tau 2 - 336x256 (17µm) 30Hz Core, 50 mm Lens
TAT176CN5APMR01	Thermosight CM Pro 336 (60 Hz) FLIR Tau 2 - 336x256 (17µm) 60Hz Core, 50 mm Lens
TAT163CN5APMR01	Thermosight CM Pro 640(30 Hz) FLIR Tau 2 - 640x512 (17µm) 30Hz Core, 50 mm Lens
TAT166CN5APMR01	Thermosight CM Pro 640 (60 Hz) FLIR Tau 2 - 640x512 (17µm) 60Hz Core, 50 mm Lens
TAT163CN1APLR01	Thermosight CL Pro 640 (30 Hz) FLIR Tau 2 - 640x512 (17µm) 30Hz Core, 100 mm Lens
TAT166CN1APLR01	Thermosight CL Pro 640 (60 Hz) FLIR Tau 2 - 640x512 (17µm) 60Hz Core, 100 mm Lens
ACCESSORIES	
ATVR000002	IRIS Wireless Head Mounted Display
IALA00AMRF22001	AMRF2200 - Advanced Modular (Laser) Range Finder
ANAM000045	Extended Rail Adapter #85 - Dovetail Weaver Picatinny Rail Adapter
ATAM000005	HD DVR - High-Definition Digital Recorder
ATAM000008	Extended Battery Pack - Extended Battery Pack with Rechargeable Batteries
ANH0000001	Hard Shipping/ Storage Case #101



FLIR*IRIS-W HMD*

Wireless Head Mounted Display

Iris Head Mounted Display (Iris HMD) is a remote heads-up display for thermal and digital imaging systems. The Iris HMD allows the operator to view the system display without looking through the eyepiece. This permits the operator to remotely view the imagery and target acquisition data discretely from a concealed position during surveillance and enemy engagement. The Iris HMD is ideally suited for use with medium and heavy machine guns where significant weapon recoil is present. The Iris HMD is also the perfect tool for fighting in built-up areas (FIBUA) where sighting and engaging the enemy around corners, in tunnels, through windows and into other confined spaces with minimum exposure is paramount. The Iris HMD can also be used in conjunction with proximally located remote weapon stations on armored vehicles or static emplacements where operators require concealment for covertness or safety in a hostile environment.

Weighing in at 150g, the Iris Head Mounted Display is small and lightweight with very low power consumption. It can operate continuously on rechargeable lithium batteries for up to 2 hours. The Iris HMD interface is compatible with most in-service US Army/Navy head and helmet mounts with the selection of the appropriate adapter. The optional ergonomic, fully adjustable padded head mount assembly allows the Iris HMD to be flipped out of the line of sight when necessary or rapidly removed. The Iris HMD is the right tool for enhancing operational flexibility and capability for the 21st century warrior on the tactical battlefield.

- Head or helmet-mountable flip-up display
- Left or right eye use
- High Performance OLED display
- Video-In: analog PAL/NTSC standard, cable included

SPECS

TRANSMISSION FREQUENCY	2.4 GHz
WORKING RANGE	Up to 10 m
DISPLAY TYPE	OLED SVGA
DISPLAY RESOLUTION	800 × 600
EYEPICE FOCAL LENGTH	F27
DIMENSIONS:	
- Eyepiece Unit	79 × 44 × 47 mm (3.1 × 1.7 × 1.85")
- Control Unit	76 × 50 × 21 mm (3 × 2 × 0.8")
- Transmitter	76 × 50 × 31 mm (3 × 2 × 1.2")
WEIGHT:	
- Eyepiece Unit	150 g (5.3 oz)
- Control Unit	80 g (2.8 oz)
- Transmitter	80 g (2.8 oz)

PART NO.	MODEL
ATVR000002	IRIS Wireless Head Mounted Display for High-Performance Digital and Thermal Devices



FLIR AMRF2200*

Advanced Modular Range Finder

The Advanced Modular Rangefinder (AMRF) is designed to determine the exact distance between the observer and the target between 5 and 2,000 meters. It works with any scope, both optical and night vision or thermal. Measurement results are displayed on displays that are built into the rangefinder. Using an optional cable rangefinder can also be connected to Night Vision Digital Scope. With a rugged, lightweight composite housing, AMRF2200 is waterproof and shock-resistant. The mount system is designed to fit any Picatinny MIL-STD-1913 or Weaver weapon rail. An adjustable lever-cam clamping device ensures quick, easy, and reliable mounting and disassembly.

- High Accuracy
- Wide range of measurement from 5 to 2000 m
- Built-in display
- Clicking mechanisms for boresight adjustment
- Fits any Picatinny MIL-STD-1913 and Weaver rail with an adjustable quick-detach mount
- Lightweight durable high-impact plastic body

FLIR AMRF2200B*

Advanced Modular Range Finder

SPECS

DISTANCE MEASUREMENT RANGE	from 5 to 2,000 m
MEASUREMENT PRECISION	±1 m
ENTRANCE PUPIL DIAMETER	23 mm
EMISSION WAVELENGTH:	
- Instrument laser	905 nm
- Alignment laser	850 nm
MAXIMUM OUTPUT POWER:	
- Instrument laser	0.9 mW
- Alignment laser	0.6 mW ±0.1 mW
EMISSION DIVERGENCE:	
- Instrument laser	3.0 (30 sm on a distance of 100 m)
- Alignment laser	0.5 (5 sm on a distance of 100 m)
BORESIGHT ADJUSTMENT RANGE	±35 mrad (±2°)
BORESIGHT ADJUSTMENT INCREMENT	0.5 mrad ±0.05 mrad (5 sm on a distance of 100 m)
WEAPON MOUNT TYPE	Picatinny or Weaver rail
POWER SUPPLY	Two CR123 lithium batteries (3.0 V)
CURRENT CONSUMPTION:	
- Measuring mode	140 mA
- Alignment mode	50 mA
- Standby mode	30 mA
DIMENSIONS	109 × 69 × 73 mm (4.3 × 2.7 × 2.9")
WEIGHT WITHOUT BATTERIES	320 g (11.3 oz)
SHOCK LOAD TOLERANCE	700 g

PART NO.	MODEL
IALA00AMRF22001	AMRF2200 - Advanced Modular (Laser) Range Finder for Thermal (Tau 2 based) devices
IALA00AMRF2200B1	AMRF2200B - Advanced Modular (Laser) Range Finder for Thermal (Boson based) devices





NIGHT VISION

VEGA MINI®

Night Vision Monocular

If low-cost, high quality Night Vision is what you need, the Armasight Vega Mini monocular is the best choice. The Generation 1 Vega Mini is the perfect in-expensive option for camping, hunting, boating or security – for these activities at night, the Armasight Vega Mini will give you the edge. A built-in short range IR illuminator allows the Vega Mini to work well even in complete darkness, and an optional Armasight long range infra-red illuminator will dramatically boost viewing range if required. The Armasight Vega Mini features all-glass optics, a single push-button control and rugged reinforced composite housing.

The Vega is also available as Night Vision goggle system. This model comes complete with headgear, which allows the unit to be mounted for hands-free operation.

- Compact and lightweight
- High resolution Gen. 1+ Image Intensifier Tube
- Built-in flood infrared illuminator
- Can be used in conjunction with long range IR Illuminator
- Water and fog resistant
- Limited Two-Year Warranty

SPECS

MAGNIFICATION	1x
LENS SYSTEM	35 mm; F/1.7
FIELD OF VIEW	35°
DIMENSIONS	147 × 82 × 46 mm (5.8 × 3.2 × 1.8")
WEIGHT	0.25 kg (0.54 lb)

PART NO.	MODEL
NKGVEGA0M11111	Vega-Mini - Gen 1+ Night Vision Monocular
NKGVEGA0011111	Vega - Gen 1+ Night Vision Goggle
ACCESSORIES	
ANKIXLR017	IR850-XLR Detachable X-Long-Range Infrared Illuminator w/Dovetail to Weaver Transfer Piece #21, Rechargeable Battery, and Charger



FLIR **AVENGER 10X**

Night Vision Monocular

The Avenger 10x is the new standard by which all long range Night Vision monoculars will be judged in the future. The Avenger 10x uses advanced military-grade optics built into a tough and ergonomic composite housing delivering 10x optical magnification, making it the perfect unit for long range night time observation. Avenger 10x can withstand saltwater, rain, high humidity and temperature extremes, and still provide unsurpassed levels of performance. The Avenger 10x is equipped with manual variable gain control so that the user can select the image brightness level, in order to properly adjust for ambient light levels in the environment. The Avenger 10x comes included with high-powered IR illuminator for long-range use. The Avenger 10x can be equipped with high-performance Gen 2+ and Gen 3 IITs including Green phosphor or "Quick Silver" and "Ghost" IITs, which provide users with natural B&W night vision displays. The Avenger 10x is a high-standard night vision device that will meet the requirements of the most demanding law enforcement officer, military professional, or casual civilian user.

- Powerful 10x magnification
- Rugged design
- IR850-XLR Detachable Extra Long-range IR illuminator included
- Utilizes single CR123A lithium or AA battery
- Adaptable for use with cameras
- Limited two-year warranty

SPECS	
MAGNIFICATION	10x
LENS SYSTEM	192 mm; F/2.13
FIELD OF VIEW	5.2°
DIMENSIONS	288 × 100 × 100 mm (11.3 × 3.9 × 3.9")
WEIGHT	1.33 kg (2.9 lb)

PART NO.	MODEL
NSMAVENGE029II1	Avenger 10X IDi MG – Gen 2+ "Improved Definition" with XLR-IR850 Illuminator and Manual Gain
NSMAVENGE029IH1	Avenger 10X HDi MG – Gen 2+ "High Definition" with XLR-IR850 Illuminator and Manual Gain
NSMAVENGE009II1	Avenger 10X QSi MG – Gen 2+ "Quick Silver - White Phosphor with XLR-IR850 Illuminator and Manual Gain
NSMAVENGE0G9EA1	Avenger 10X Ghost E MG – Gen 3 "Ghost" White Phosphor with XLR-IR850 Illuminator and Manual Gain
NSMAVENGE039EA1	Avenger 10X 3E MG – Gen 3 with XLR-IR850 Illuminator and Manual Gain
NSMAVENGE039NA1	Avenger 10X 3N MG – Gen 3 High Performance with XLR-IR850 Illuminator and Manual Gain
ACCESSORIES	
ANAMTM0003	Tripod with a Grip
ANAF18XLRM	IR850XLR Doubler - Enhances performance of IR850-XLR Illuminator
ANHCO00004	Hard Shipping/ Storage Case #102



SPARK[®]**Multi-Purpose Night Vision Monocular**

The Spark monocular represents a revolutionary new approach to Night Vision: CORE (Ceramic Optical Ruggedized Engine) image intensifier tubes. While CORE does not contain a microchannel plate (and so by definition lands in the Gen 1 category), that is where the parallels end. Instead of glass, CORE tubes use a specially formulated ceramic compound fused with metal alloys, similar to those used in the production of Gen 2 and Gen 3 image intensifier tubes. Further advances in CORE technology have removed almost all edge distortion, dramatically increased photocathode sensitivity, and most importantly, nearly doubled resolution up to 70 lp/mm.

The Spark is the perfect partner for this new hybrid tube-type – a rugged, lightweight, multi-purpose Night Vision monocular. With optional accessories, it can be hand-held or mounted to headgear. With a day scope adapter, it can convert your existing day scope into a Night Vision device at a cost-effective price. With an optional 3X a-focal lens and IR illuminator, the Spark can serve as a medium-range, ultra-high resolution spotting scope, and with the optional camcorder/ camera adapter, it can even take video or still photography in near-to-total darkness.

The Spark is the ideal Night Vision unit for the outdoorsman or first responder who demands higher resolution, better image clarity, and greater durability than any standard Gen 1 unit can offer.

- Compact, rugged design
- Head- helmet- or weapon-mountable
- Utilizes single CR123A lithium battery
- Adaptable for use with cameras
- Built-in Infrared illuminator
- Limited Two-Year Warranty

SPECS

MAGNIFICATION	1x
LENS SYSTEM	35mm; F/1.7
FIELD OF VIEW	35°
DIMENSIONS	149 × 49 × 82 mm (5.8 × 1.9 × 3.2")
WEIGHT	0.37 kg (0.8 lb)

PART NO.	MODEL
NSMSPARK01CCIC1	Spark - "CORE" IIT, 60-70 lp/mm
ACCESSORIES[®]	
ANHG000001	Goggle Kit #1
ANHM000002	Helmet Mount #3 (MICH/PASGT)
ANHM000170	Helmet Mount #170 (Shroud)
ANHG000002	Swing Arm #37: Mini Rail Adapter to Bayonet Mount
ANHM000172	Swing Arm #172: Mini Rail to Dovetail Adapter
ANHM000197	Dual Bridge #197 with individual side Flip-Up Mechanism
ANAF3X0023	3x A-Focal Lens Kit: Lens #22 with Adapter #23
ANAF5X0023	5x A-Focal Lens with Adapter #23
ANAMRF0003	ARFS3 - Advanced Range-Finding Stadia for 3x A-Focal Lens
ANAMRF0005	ARFS5 - Advanced Range-Finding Stadia for 5x A-Focal Lens
ANAM000004	QRM - Quick-Release Weapon Mount #26/ #142
ANKI000032	AIM PRO - Advanced Integrated Mount Pro
ANKIXLR017	IR850-XLR Detachable X-Long-Range Infrared Illuminator w/Dovetail to Weaver Transfer Piece #21, Rechargeable Battery, and Charger
ANAF18XLRM	IR850XLR Doubler - Enhances performance of IR850-XLR Illuminator
ANAM000006	Universal Camera Adapter #45 - Fully-Adjustable Video/ Photo Camera Adapter
ANHCO00001	Hard Shipping/ Storage Case #101



SIRIUS®

Multi-Purpose Night Vision Monocular

The Armasight Sirius is a high-tech, tough, and durable multi-use Night Vision monocular that delivers great performance at a reasonable cost. Packed with features, the Sirius is a unit that is equally as appropriate for the hunter as it is for the professional security officer or law enforcement professional. Mission configurable, the Sirius can be hand-held or mounted to a helmet or headgear. It can also be mounted onto a rifle, or used for night photography. Optional lenses can turn it into a long-range night viewing device in seconds.

Despite the low cost, the Sirius features manual brightness control, bright light shut-off circuitry, and a built-in spot/flood IR illuminator. The Armasight Sirius can be equipped with high-performance Gen 2+, including Green phosphor or "Quick Silver", which provide users with natural B&W Night Vision displays.

- Compact, rugged design
- Head- helmet- or weapon-mountable
- Auto-brightness control
- Bright light cut-off
- Utilizes single CR123A lithium battery or AA Alkaline, adapter included
- Built-in infrared illuminator and flood lens
- Limited two-year warranty

SPECS

MAGNIFICATION	1x
LENS SYSTEM	24mm; F/1.2
FIELD OF VIEW	40°
DIMENSIONS	157 × 60 × 75 mm (6.2 × 2.4 × 2.9")
WEIGHT	0.46 kg (1.0 lb)

PART NO.	MODEL
NSMSIRIUS12MIS1	Sirius SDi MG – Gen 2+ "Standard Definition" with Manual Gain
NSMSIRIUS12MII1	Sirius IDi MG – Gen 2+ "Improved Definition" with Manual Gain
NSMSIRIUS1QMII1	Sirius QSi MG – Gen 2+ "Quick Silver" White Phosphor with Manual Gain
ACCESSORIES	
ANHG000004	Goggle Kit #2
ANHM000001	Helmet Mount #4 (MICH/PASGT)
ANHM000183	Helmet Mount #183 (Shroud)
ANHG000002	Swing Arm #37 - Mini Rail Adapter to Bayonet Mount
ANHM000172	Swing Arm #172 - Mini Rail to Dovetail Adapter
ANAF3X0023	3x A-Focal Lens Kit: Lens #22 with Adapter #23
ANAF5X0023	5x A-Focal Lens with Adapter #23
ANAMRF0003	ARFS3 - Advanced Range-Finding Stadia for 3x A-Focal Lens
ANAMRF0005	ARFS5 - Advanced Range-Finding Stadia for 5x A-Focal Lens
ANAM000004	QRM - Quick-Release Weapon Mount #26/ #142
ANKI000032	AIM PRO - Advanced Integrated Mount Pro
ANKI000049	AIM PRO-L - Advanced Integrated Mount Pro Long
ANAM000045	Extended Rail Adapter #85 - Dovetail Weaver Picatinny Rail Adapter
ANAM000016	Camera Adapter #47
ANAM000006	Universal Camera Adapter #45 - Fully-Adjustable Video/ Photo Camera Adapter
ANKIXLR017	IR850-XLR Detachable X-Long-Range Infrared Illuminator w/Dovetail to Weaver Transfer Piece #21, Rechargeable Battery, and Charger
ANAF18XLRM	IR850XLR Doubler - Enhances performance of IR850-XLR Illuminator
ANH000001	Hard Shipping/ Storage Case #101



FLIR PVS-14[®]**Multi-Purpose Night Vision Monocular**

The United States Military commissioned the AN/PVS-14 multi-purpose Night Vision monocular in the late '90s. Today, there are more AN/PVS-14 units currently deployed in NATO Armies than any other Night Vision device. The AN/PVS-14 was the first real multi-use monocular, allowing it to fulfill a huge variety of military needs. It is also one of the most popular Night Vision units for law enforcement professionals.

The FLIR PVS-14 uses the same framework, and its battle-proven design is lightweight and tough with superb optics. The PVS-14 is compatible with a host of accessories, allowing it to be hand-held, mounted to a helmet, headgear, weapon, or camera. Designed for the most demanding nighttime Military or law enforcement operations, it is one of the best systems available. The FLIR PVS-14 can be equipped with high-performance Gen 2+ and Gen 3 IITs, including Green phosphor or "Quick Silver" and "Ghost" IITs, which provide users with natural B&W Night Vision displays.

- Compact, rugged design
- Waterproof
- Head or helmet-mountable
- Ergonomic, simple, easy to operate controls
- Built-in infrared illuminator
- Limited two-year warranty

SPECS

MAGNIFICATION	1x
LENS SYSTEM	26mm; F/1.2
FIELD OF VIEW	40°
DIMENSIONS	114 × 51 × 57 mm (4.5 × 2.0 × 2.2")
WEIGHT	0.35 kg (0.77 lb)

PART NO.	MODEL
NAMPVS1401G9EA1	PVS-14 Ghost E – Gen 3 "Ghost" White Phosphor
NAMPVS140139EA1	PVS-14 3E – Gen 3
NAMPVS140139NA1	PVS-14 3N – Gen 3 High Performance
ACCESSORIES	
ANHM000005	Norotos MICH Helmet Mount Assembly USA #107
ANHM000006	Norotos PASGT Helmet Mount Assembly USA #108
ANAF3X0003	3x A-Focal Mil-Spec Lens #99
ANAF5X0001	5x A-Focal Mil-Spec Lens #100
ANAF3X000P	3x A-Focal Lens #22 with Adapter #24/#25
ANAF5X000P	5x A-Focal Lens with Adapter #24/#25
ANAMRF0003	ARFS3 - Advanced Range-Finding Stadia for 3x A-Focal Lens
ANAMRF0005	ARFS5 - Advanced Range-Finding Stadia for 5x A-Focal Lens
ANKI000032	AIM PRO - Advanced Integrated Mount Pro
ANKI000049	AIM PRO-L - Advanced Integrated Mount Pro Long
ANKI000046	Adapter Ring #62 - Adapter Ring to attach PVS-14 onto AIM-Pro and AIM-Pro-L
ANAM000045	Extended Rail Adapter #85 - Dovetail Weaver Picatinny Rail Adapter
ANKIXLR017	IR850-XLR Detachable X-Long-Range Infrared Illuminator w/Dovetail to Weaver Transfer Piece #21, Rechargeable Battery, and Charger
ANAF18XLRM	IR850XLR Doubler - Enhances performance of IR850-XLR Illuminator
ANHCO00001	Hard Shipping/ Storage Case #101



FLIR **NYX-14M**

Multi-Purpose Night Vision Monocular

- The NYX-14M Night Vision monocular is without equal in its class, delivering unmatched performance, even in harsh conditions on land or at sea.
- The Nyx-14M mini-monocular is equipped with manual variable gain control so that the image brightness level can be selected by the user to adjust for the ambient light level in his area of operations. The Nyx-14M is available with a whole array of accessories like – 3, 5 and 8x magnification lenses for mid-long range viewing,
- head or helmet mounts to allow the unit to be worn as a mono-goggle, various different weapon mounts for tactical or hunting use and high powered additional IR illuminators for long range use. The NYX-14M is available in Gen 2 + and Gen 3 variants, and is well-matched for wherever your mission takes you.
- The N-14 Night Vision monocular is equipped with the same features as the Nyx-14M, with the exception of manual gain control option.
- Compact, rugged design
 - Head- helmet- or weapon-mountable
 - Manual variable gain control (Nyx-14M)
 - Utilizes single CR123A lithium or AA battery
 - Built-in infrared illuminator
 - Limited two-year warranty

FLIR **N-14**

Multi-Purpose Night Vision Monocular

SPECS	NYX-14M-51	NYX-14M-40	N-14
MAGNIFICATION	1x	1x	1x
LENS SYSTEM	19 mm; F/1.26	27 mm; F/1.3	27 mm; F/1.3
FIELD OF VIEW	51°	40°	40°
DIMENSIONS	104 × 49 × 71 mm (4.1 × 1.9 × 2.8")	115 × 49 × 71 mm (4.6 × 1.9 × 2.8")	115 × 49 × 71 mm (4.6 × 1.9 × 2.8")
WEIGHT	0.31 kg (0.7 lb)	0.38 kg (0.84 lb)	0.38 kg (0.84 lb)

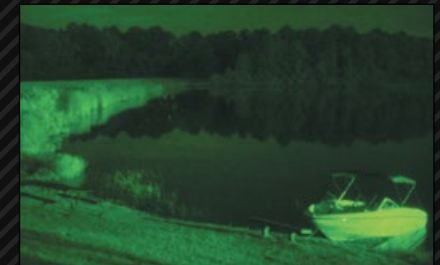
PART NO.	MODEL
NSMN14000126IS1	N-14 SDi – Gen 2+ "Standard Definition"
NSMN14000126II1	N-14 IDi – Gen 2+ "Improved Definition"
NSMN14000126IH1	N-14 HDi – Gen 2+ "High Definition"
NSMN140001Q6II1	N-14 QSi – Gen 2+ "Quick Silver - White Phosphor"
NSMN140001G6EA1	N-14 Ghost E – Gen 3 "Ghost" White Phosphor
NSMN14000136EA1	N-14 3E – Gen 3
NSMN14000136NA1	N-14 3N – Gen 3 High Performance



PART NO.	MODEL
NSMNYX14N429IS1	Nyx-14M-40 SDi MG – Gen 2+ "Standard Definition" with Manual Gain
NSMNYX14N429II1	Nyx-14M-40 IDi MG – Gen 2+ "Improved Definition" with Manual Gain
NSMNYX14N429IH1	Nyx-14M-40 HDi MG – Gen 2+ "High Definition" with Manual Gain
NSMNYX14N4Q9II1	Nyx-14M-40 QSi MG – Gen 2+ "Quick Silver - White Phosphor" with Manual Gain
NSMNYX14N4G9EA1	Nyx-14M-40 Ghost E MG – Gen 3 "Ghost" White Phosphor with Manual Gain
NSMNYX14N439EA1	Nyx-14M-40 3E MG – Gen 3 with IR Laser with Manual Gain
NSMNYX14N439NA1	Nyx-14M-40 3N MG – Gen 3 High Performance with Manual Gain
NSMNYX14N529IS1	Nyx-14M-51 SDi MG – Gen 2+ "Standard Definition" with Manual Gain
NSMNYX14N529II1	Nyx-14M-51 IDi MG – Gen 2+ "Improved Definition" with Manual Gain
NSMNYX14N529IH1	Nyx-14M-51 HDi MG – Gen 2+ "High Definition" with Manual Gain
NSMNYX14N5Q9II1	Nyx-14M-51 QSi MG – Gen 2+ "Quick Silver - White Phosphor" with Manual Gain
NSMNYX14N5G9EA1	Nyx-14M-51 Ghost E MG – Gen 3 "Ghost" White Phosphor with Manual Gain
NSMNYX14N539EA1	Nyx-14M-51 3E MG – Gen 3 with IR Laser with Manual Gain
NSMNYX14N539NA1	Nyx-14M-51 3N MG – Gen 3 High Performance with Manual Gain



PART NO.	ACCESSORIES
ANHG000004	Goggle Kit #2
ANHM000001	Helmet Mount #4 (MICH/PASGT)
ANHM000183	Helmet Mount #183 (Shroud)
ANHG000002	Swing Arm #37 - Mini Rail Adapter to Bayonet Mount
ANHM000172	Swing Arm #172 - Mini Rail to Dovetail Adapter
ANHM000188	Armasight Dual Bridge #188 with individual side Flip-Up Mechanism
ANAF3X0002	3x A-Focal Lens #22
ANAF5X0002	5x A-Focal Lens
ANAMRF0003	ARFS3 - Advanced Range-Finding Stadia for 3x A-Focal Lens
ANAMRF0005	ARFS5 - Advanced Range-Finding Stadia for 5x A-Focal Lens
ANEC000001	Shutter Eyeguard #82
ANAM000004	QRM - Quick-Release Weapon Mount #26/ #142
ANKI000032	AIM PRO - Advanced Integrated Mount Pro
ANKI000049	AIM PRO-L - Advanced Integrated Mount Pro Long
ANAM000045	Extended Rail Adapter #85 - Dovetail Weaver Picatinny Rail Adapter
ANAM000001	Scope Adapter Mount #6 - Allows NV Monocular to be mounted behind standard daytime optics for nighttime use
ANLC000001	Demist Shield #34
ANLC000002	Sacrificial Window #30
ANRA000001	Dovetail#21 - Weaver Transfer Piece to attach IR Illuminator
ANAM000029	Camera Adapter #46
ANAM000006	Universal Camera Adapter #45 - Fully-Adjustable Video/ Photo Camera Adapter
ANKIXLR017	IR850-XLR Detachable X-Long-Range Infrared Illuminator w/Dovetail to Weaver Transfer Piece #21, Rechargeable Battery, and Charger
ANAF18XLRM	IR850XLR Doubler - Enhances performance of IR850-XLR Illuminator
ANH000001	Hard Shipping/ Storage Case #101



SPARK-G[®]

Night Vision Goggles

Armasight Spark-G Night Vision goggle system is built around CORE™ (Ceramic Optical Ruggedized Engine) image intensifier tubes. Unlike Gen 1 Image intensifier tubes, which are made from fragile glass components, CORE™ IITs are made just like Gen 2 and Gen 3: by fusing metal alloys with ceramic compounds. CORE™ technology is based on durable elements and allows tight component stacking, resulting in image tubes that are exceptionally shockproof and vibration-resistant. Robust packaging protects easy-to-break protrusions common in Gen 1 tubes, and allows for a streamlined design that is lighter, more compact, and more reliable than average Night Vision devices.

The CORE™ platform offers 'best in class' resolution with 60-70 lp/mm and an increased photocathode sensitivity level of upwards of 400 µA/lm, providing high image quality even in difficult ambient light conditions, rivaling high-end Gen 2 image tubes.

The Armasight Spark-G is a rugged and lightweight Night Vision monocular. The Armasight Spark-G comes complete with headgear, which allows the unit to be mounted for hands-free operation.

- Compact and lightweight
- Built-in flood infrared illuminator
- Fully adjustable headgear for ultimate comfort
- Can be used in conjunction with long-range IR illuminator
- Water and fog-resistant
- Limited two-year warranty

SPECS	
MAGNIFICATION	1x
LENS SYSTEM	35 mm; F/1.7
FIELD OF VIEW	35°
DIMENSIONS	149 × 49 × 82 mm (5.8 × 1.9 × 3.2")
WEIGHT	0.37 kg (0.82 lb)

PART NO.	MODEL
NSGSPARK01CCIC1	Spark-G - "CORE" IIT, 60-70 lp/mm
ACCESSORIES*	
ANHM000002	Helmet Mount #3 (MICH/PASGT)
ANKIXLR017	IR850-XLR Detachable X-Long-Range Infrared Illuminator w/Dovetail to Weaver Transfer Piece #21, Rechargeable Battery, and Charger
ANAF18XLRM	IR850XLR Doubler - Enhances performance of IR850-XLR Illuminator



NYX-7

Night Vision Goggles

The Armasight Nyx-7 is a bi-ocular Night Vision goggle system built around high-grade Gen 2+ image intensifier tubes. They are an exceptional choice for hands-free use. Built with high-grade optics and simple, reliable electronics, the Nyx-7 provides bright and clear Night Vision images, even in the most trying conditions. This unit includes a built-in IR light source for reading maps or basic, short-range illumination in complete darkness.

The Armasight Nyx-7 is available with a variety of accessories such as 3X, 5X and 7X magnification lenses for mid-to-long-range viewing, head or helmet mounts for hands-free operation, and additional, high-powered IR illuminators for long-range use.

Water-resistant, rugged, light, and compact, the Nyx-7 is the perfect hands-free unit for a variety of tough operations.

- Lightweight, compact rugged Night Vision goggle system
- Hand-held or helmet-mounted
- Comfortable, flip-up headgear
- Multi-coated all-glass optics
- Auto-brightness control
- Utilizes single CR123A lithium battery or AA Alkaline, adapter included
- Water and fog-resistant
- Limited two-year warranty

SPECS

MAGNIFICATION	1x
LENS SYSTEM	24mm; F/1.2
FIELD OF VIEW	40°
DIMENSIONS	150 × 102 × 70 mm (5.9 × 4.0 × 2.7")
WEIGHT	0.45 kg (0.9 lb)

PART NO.	MODEL
NSGNYX70012GIS1	Nyx-7 SDi – Gen 2+ "Standard Definition"
NSGNYX70012GII1	Nyx-7 IDi – Gen 2+ "Improved Definition"
NSGNYX7001QGII1	Nyx-7 QSi – Gen 2+ "Quick Silver" White Phosphor
ACCESSORIES	
ANHM000001	Helmet Mount #4 (MICH/PASGT)
ANAF3X0023	3x A-Focal Lens Kit: Lens #22 with Adapter #23
ANAF5X0023	5x A-Focal Lens with Adapter #23
ANAMRF0003	ARFS3 - Advanced Range-Finding Stadia for 3x A-Focal Lens
ANAMRF0005	ARFS5 - Advanced Range-Finding Stadia for 5x A-Focal Lens
ANKIXLR017	IR850-XLR Detachable X-Long-Range Infrared Illuminator w/Dovetail to Weaver Transfer Piece #21, Rechargeable Battery, and Charger
ANAF18XLRM	IR850XLR Doubler - Enhances performance of IR850-XLR Illuminator
ANH000001	Hard Shipping/ Storage Case #101



FLIR **NYX-7 PRO**

Night Vision Goggles

The FLIR Nyx-7 PRO is an extremely rugged, compact bi-ocular night vision goggle system. Built with the highest-grade optics and simple, reliable electronics, the Nyx-7 PRO provides clear, bright nighttime images under even the most trying conditions. For hands-free use, it can be worn on the included flip-up head mount or optional universal helmet mount, both of which have a built-in mechanism that will automatically turn the unit off when it is flipped up. The NYX-7 PRO can be equipped with high-performance Gen 2+ or Gen 3 image tubes. The dismounted goggle can also be utilized as an excellent long-range viewer with optional 3x, and 5x afocal, 6x, and 8x magnifier lenses.

Rugged, lightweight, and compact, the Nyx-7 PRO is the perfect hands-free unit for users ranging from the casual civilian to the most demanding military and law enforcement professionals.

- Compact and lightweight, rugged design
- Head- or helmet-mountable
- Ergonomic, simple, easy to operate controls
- Utilizes single CR123A lithium battery or AA Alkaline, adapter included
- Built-in infrared illuminators and flood lens
- Limited two-year warranty

SPECS

MAGNIFICATION	1x
LENS SYSTEM	27mm; F/1.2
FIELD OF VIEW	40°
DIMENSIONS	165 × 120 × 61 mm (6.5 × 4.7 × 2.4")
WEIGHT	0.49 kg (1.0 lb)

PART NO.	MODEL
NSGNYX7P0123II1	Nyx-7 PRO IDi – Gen 2+ "Improved Definition"
NSGNYX7P0123IH1	Nyx-7 PRO HDi – Gen 2+ "High Definition"
NSGNYX7P01Q3II1	Nyx-7 PRO QSi – Gen 2+ "Quick Silver" White Phosphor
NSGNYX7P0133EA1	Nyx-7 PRO 3E – Gen 3
NSGNYX7P0133NA1	Nyx-7 PRO 3N – Gen 3 High Performance
ACCESSORIES	
ANHM000001	Helmet Mount #4 (MICH/PASGT)
ANAM000034	Adapter #59 Mini Rail Adapter to Bayonet Mount
ANAF3X0002	3x A-Focal Lens #22
ANAF5X0002	5x A-Focal Lens
ANAMRF0003	ARFS3 - Advanced Range-Finding Stadia for 3x A-Focal Lens
ANAMRF0005	ARFS5 - Advanced Range-Finding Stadia for 5x A-Focal Lens
ANKIXLR017	IR850-XLR Detachable X-Long-Range Infrared Illuminator w/Dovetail to Weaver Transfer Piece #21, Rechargeable Battery, and Charger
ANAF18XLRM	IR850XLR Doubler - Enhances performance of IR850-XLR Illuminator
ANHCO00001	Hard Shipping/ Storage Case #101



FLIR PVS-7[®]**Night Vision Goggles**

The FLIR PVS-7 is the most widely recognized and dependable United States Military Night Vision goggle system available. The AN/ PVS-7B/ D system has proven itself in combat due to its rugged, ergonomic design.

The PVS-7 can be equipped with high-performance Gen 2+ and Gen 3 variants of image intensifier tubes, using either Green phosphor or "Quick Silver" and "Ghost" image intensifier tubes, which provide users with natural black-and-white night vision image.

The PVS-7 is equipped with Automatic Brightness Control (ABC), which automatically adjusts the brightness of the image tube to achieve the highest quality image resolution under varying light conditions, as well as a built-in infrared illuminator that allows the user to operate in total darkness. The PVS-7 also has an excessive-light cut-off feature that protects the image tube from bright light sources, and a flip-up shut-off feature when used with the optional helmet mount assembly. The PVS-7 is equipped with two LED indicators: yellow for a low battery, and red to alert the operator that the IR illuminator is on. Both are displayed on the eyepiece screen. Lightweight, rugged, and versatile, the PVS-7 can be hand-held, mounted to headgear, and helmet-mounted. The dismounted goggle can also be used as an excellent long-range viewer with optional afocal magnifier lenses.

- Compact, rugged, waterproof design
- Head or helmet-mountable
- Auto-brightness control
- Bright light cut-off
- Built-in infrared illuminators
- Limited two-year warranty

SPECS

MAGNIFICATION	1x
LENS SYSTEM	27mm; F/1.2
FIELD OF VIEW	40°
DIMENSIONS	162 × 152 × 76 mm (6.4 × 6.0 × 3.0")
WEIGHT	0.68 kg (1.5 lb)

PART NO.	MODEL
NAMPVS700133EA1	PVS-7 3E – Gen 3
NAMPVS700133NA1	PVS-7 3N – Gen 3 High Performance
ACCESSORIES	
ANHM000005	Norotos MICH Helmet Mount Assembly USA #107
ANHM000006	Norotos PASGT Helmet Mount Assembly USA #108
ANAF3X0003	3x A-Focal Mil-Spec Lens #99
ANAF5X0001	5x A-Focal Mil-Spec Lens #100
ANAF3X000P	3x A-Focal Lens #22 with Adapter #24/#25
ANAF5X000P	5x A-Focal Lens with Adapter #24/#25
ANAMRF0003	ARFS3 - Advanced Range-Finding Stadia for 3x A-Focal Lens
ANAMRF0005	ARFS5 - Advanced Range-Finding Stadia for 5x A-Focal Lens
ANKI000032	AIM PRO - Advanced Integrated Mount Pro
ANKI000049	AIM PRO-L - Advanced Integrated Mount Pro Long
ANKI000046	Adapter Ring #62 - Adapter Ring to attach PVS-14 onto AIM-Pro and AIM-Pro-L
ANAM000045	Extended Rail Adapter #85 - Dovetail Weaver Picatinny Rail Adapter
ANKIXLR017	IR850-XLR Detachable X-Long-Range Infrared Illuminator w/Dovetail to Weaver Transfer Piece #21, Rechargeable Battery, and Charger
ANAF18XLRM	IR850XLR Doubler - Enhances performance of IR850-XLR Illuminator
ANHC000001	Hard Shipping/ Storage Case #101



FLIR NYX-15M[®]

Night Vision Goggles

The Nyx-15M is a dual-channel Night Vision goggle system. The Nyx-15M uses advanced, military-grade optics and a tough, compact, and ergonomic composite housing. The Nyx-15M can be used as a monocular, goggles, or stowed out of the way without removing. This device operates with a single gain control knob and utilizes features like a flip up turn off with flip down turn back on function, when used in conjunction with a helmet mount. There is also an integral infrared illuminator for reading a map.

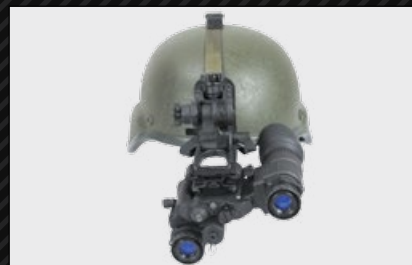
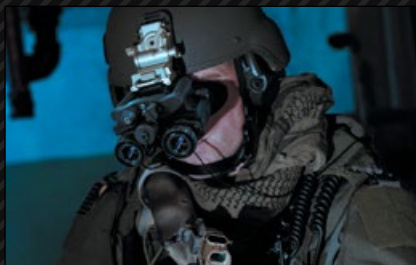
The Nyx-15M includes head and helmet mounting options for the AN/PVS-7D, AN/PVS-14, AN/PVS-7A/C, AN/PVS-15 and AN/PVS-18. The Nyx-15M can run off a single on-board AA battery or a remote battery pack mounted behind the helmet for extended use.

The Nyx-15M is the high-standard Night Vision device that will meet the requirements of the most demanding law enforcement officer, military professional, or casual civilian user.

- Compact and lightweight, rugged design
- Manual gain control
- Head or helmet-mountable
- Remote battery pack for extended use
- Built-in infrared illuminator
- Limited two-year warranty

SPECS	NYX-15M-51	NYX-15M-40
MAGNIFICATION	1x	1x
LENS SYSTEM	19 mm; F/1.26	27 mm; F/1.3
FIELD OF VIEW	51°	40°
DIMENSIONS	104 × 118 × 71 mm (4.1 × 4.6 × 2.8")	115 × 118 × 71 mm (4.5 × 4.6 × 2.8")
WEIGHT	0.7 kg (1.5 lb)	0.85 kg (1.9 lb)

PART NO.	MODEL
NSGNYX15N426II1	Nyx-15M-40 IDi MG – Gen 2+ "Improved Definition"
NSGNYX15N426IH1	Nyx-15M-40 HDi MG – Gen 2+ "High Definition"
NSGNYX15N406II1	Nyx-15M-40 QSi MG – Gen 2+ "Quick Silver - White Phosphor"
NSGNYX15N406EA1	Nyx-15M-40 Ghost E MG – Gen 3 "Ghost" White Phosphor
NSGNYX15N436EA1	Nyx-15M-40 3E MG – Gen 3
NSGNYX15N436NA1	Nyx-15M-40 3N MG – Gen 3 High Performance
NSGNYX15N526II1	Nyx-15M-51 IDi MG – Gen 2+ "Improved Definition"
NSGNYX15N526IH1	Nyx-15M-51 HDi MG – Gen 2+ "High Definition"
NSGNYX15N506II1	Nyx-15M-51 QSi MG – Gen 2+ "Quick Silver - White Phosphor"
NSGNYX15N506EA1	Nyx-15M-51 Ghost E MG – Gen 3 "Ghost" White Phosphor
NSGNYX15N536EA1	Nyx-15M-51 3E MG – Gen 3
NSGNYX15N536NA1	Nyx-15M-51 3N MG – Gen 3 High Performance
ACCESSORIES	
ANAF3X0N15	A-Focal 3x Lens Kit (includes 2 lenses)
ANHG000004	Goggle Kit #2
ANHM000001	Helmet Mount #4 (MICH/PASGT)
ANHM000198	Helmet Mount #198 (Shroud)
ANHM000199	Helmet Mount #199 (Dovetail-Type)
ANKIXLR017	IR850-XLR Detachable X-Long-Range Infrared Illuminator w/Dovetail to Weaver Transfer Piece #21, Rechargeable Battery, and Charger
ANAF18XLRM	IR850XLR A-Focal Doubler - Enhances performance of IR850-XLR
ANHC000001	Hard Shipping/ Storage Case #101



FLIR N-15[®]**Night Vision Goggles**

The FLIR N-15 Night Vision goggle system can withstand saltwater, rain, high humidity, and temperature extremes, and still provide unsurpassed levels of performance.

For hands-free use, it can be worn on the included flip-up head mount or optional universal helmet mount, both of which have a built-in mechanism that will automatically turn the unit off when it is flipped up. The N-15 goggle is equipped with automatic brightness control, bright light shut-off circuitry, and a spot/flood built-in IR illuminator. The dismounted goggle can also be utilized as an excellent long-range viewer with an optional 3x afocal lens.

The FLIR N-15 utilizes two image intensifier tubes. This dual tube design provides increased depth perception and outstanding clarity. The N-15 can be equipped with high-performance Gen 2+ and Gen 3 IITs including Green phosphor, or "Quick Silver" and "Ghost" IITs, which provide users with natural B&W Night Vision displays.

- Compact and lightweight, rugged design
- True stereoscopic vision
- Head or helmet-mountable
- Built-in infrared illuminator with flood lens
- Limited two-year warranty

SPECS

MAGNIFICATION	1x
LENS SYSTEM	27 mm; F/1.2
FIELD OF VIEW	40°
DIMENSIONS	117 × 114 × 69 mm (4.6 × 4.5 × 2.7")
WEIGHT	0.7 kg (1.5 lb)

PART NO.	MODEL
NSGN15000126IS1	N-15 SDi – Gen 2+ "Standard Definition"
NSGN15000126II1	N-15 IDi – Gen 2+ "Improved Definition"
NSGN15000126IH1	N-15 HDi – Gen 2+ "High Definition"
NSGN150001Q6II1	N-15 QSi – Gen 2+ "Quick Silver" White Phosphor
NSGN150001G6EA1	N-15 Ghost E – Gen 3 "Ghost" White Phosphor
NSGN15000136EA1	N-15 3E – Gen 3
NSGN15000136NA1	N-15 3N – Gen 3 High Performance
ACCESSORIES	
ANAF3XON15	N15 A-Focal 3x Lens Kit (includes 2 lenses)
ANHM000001	Helmet Mount #4 (MICH/PASGT)
ANHM000147	Swing Arm #147 - Mini Rail Adapter to Bayonet Mount
ANHM000194	Swing Arm #194 - Mini Rail to Dovetail Adapter
ANKIXLR017	IR850-XLR Detachable X-Long-Range Infrared Illuminator w/Dovetail to Weaver Transfer Piece #21, Rechargeable Battery, and Charger
ANAF18XLRM	IR850XLR Doubler - Enhances performance of IR850-XLR Illuminator
ANHC000001	Hard Shipping/ Storage Case #101



DARK STRIDER®

Night Vision Binoculars

With similar weight and form factor to typical daytime binoculars, the Armasight Dark Strider Gen 1 Night Vision 5X binoculars offer superb Night Vision performance. Binocular Night Vision is ideally suited for sustained viewing periods and improved depth perception. The Dark Strider is equipped with a pair of high-quality Gen 1 image tubes, multi-coated glass lenses, and armored, rubber-coated aluminum housing.

A built-in, focusable infrared illuminator ensures exceptional operation even in total darkness. Using the Dark Strider is easy, thanks to simple control buttons and eyepiece-only focusing optics.

Powerful, tough, and practical – that’s the Armasight Dark Strider!

- Powerful 5x magnification
- Rubberized for higher protection
- Multi-coated all-glass optics
- Build-In long-range infrared illuminator
- Limited two-year warranty

SPECS	
MAGNIFICATION	5x
LENS SYSTEM	80 mm; F/1.65
FIELD OF VIEW	14°
DIMENSIONS	225 × 150 × 60 mm (8.9 × 5.9 × 2.3")
WEIGHT	1.4 kg (3.0 lb)

PART NO.	MODEL
NKBDASTRI51111	Dark Strider - Gen 1+
ACCESSORIES	
ANKIXLR023	IR850-XLR Detachable X-Long-Range Infrared Illuminator w/IRDS Adapter #115; includes Rechargeable Battery and Charger (fits Dark Strider)



EAGLE®

Night Vision Binoculars

Armasight Eagle Night Vision binoculars are high-tech, tough, and durable. They deliver great performance, but at the lowest possible cost. Packed with features, the Eagle is a unit that is equally as appropriate for the hunter as it is for the professional security officer or law enforcement professional. Despite its low cost, the Eagle features automatic brightness control, bright light shut-off circuitry, and a built-in IR illuminator.

The Armasight Eagle is a Night Vision workhorse that will satisfy the requirements and expectations of the most demanding professionals and casual Night Vision users.

- 3.5x magnification
- Redundant dual-tube design
- Utilizes single CR123A lithium battery or AA Alkaline, adapter included
- Built-in infrared illuminator
- Limited two-year warranty

SPECS	
MAGNIFICATION	3.5x
LENS SYSTEM	80 mm; F/1.65
FIELD OF VIEW	14°
DIMENSIONS	235 × 120 × 75 mm (9.2 × 4.7 × 2.9")
WEIGHT	1.52 kg (3.35 lb)

PART NO.	MODEL
NSBEAGLE032GIS1	Eagle SDi –Gen 2+; "Standard Definition" w/ IR850-XLR IR Illuminator
NSBEAGLE032GII1	Eagle IDi –Gen 2+; "Improved Definition" w/ IR850-XLR IR Illuminator
NSBEAGLE03QGI1	Eagle QSi –Gen 2+; "Quick Silver" White Phosphor w/ IR850-XLR IR Illuminator
ACCESSORIES	
ANAF18XLRM	IR850XLR Doubler - Enhances performance of IR850-XLR Illuminator



FLIR[®] DISCOVERY[™]

Night Vision Bi-Ocular

The FLIR Discovery is the ultimate long-range Night Vision observation device.

Providing enhanced performance and a highly ergonomic body, the Discovery enables users to view long distances comfortably for extended periods of time. The Discovery is the perfect tool for perimeter security, observing nature, and performing long-range surveillance.

Equipped with brand new, high-performance image intensifier tubes, our Discovery Binoculars can be hand-held or mounted onto a tripod. The Discovery can be equipped with high-performance Gen 2+ and Gen 3 IITs, including Green phosphor or "Quick Silver" and "Ghost" IITs, which provide users with natural B&W Night Vision displays. The Discovery is equipped with Automatic Brightness Control (ABC), which automatically adjusts the brightness of the image tube to achieve the highest quality image resolution under varying light conditions.

Available in 5X and 8X models, the FLIR Discovery is fitted with a Detachable Extra-Long-Range Infrared Illuminator and advanced electronic protection circuits. With a rugged body that is both water and shock resistant, but still lightweight, the Discovery is the ideal choice for hunting, wildlife observation, law enforcement, and defense applications.

- Rugged, lightweight and versatile design
- 5x or 8x magnification
- Fast, multi-coated, all-glass optics
- Dual eye viewing system for comfortable, extended nighttime viewing sessions
- R850-XLR Detachable X-Long-Range Infrared Illuminator
- Limited Two-Year Warranty

SPECS	DISCOVERY 5X	DISCOVERY 8X
MAGNIFICATION	5x	8x
LENS SYSTEM	108 mm; F/1.5	160 mm; F/2.0
FIELD OF VIEW	9.5°	6.5°
DIMENSIONS	305 × 140 × 86 mm (12.0 × 5.5 × 3.4")	350 × 140 × 100 mm (13.8 × 5.5 × 3.9")
WEIGHT	1.3 kg (2.8 lb)	1.5 kg (3.3 lb)

PART NO.	MODEL
NSBDISCOV52GIS1	Discovery 5X SDi – Gen 2+ "Standard Definition"
NSBDISCOV52GII1	Discovery 5X IDi – Gen 2+ "Improved Definition"
NSBDISCOV523IH1	Discovery 5X HDi – Gen 2+ "High Definition"
NSBDISCOV5QGI1	Discovery 5X QSi – Gen 2+ "Quick Silver" White Phosphor
NSBDISCOV533EA1	Discovery 5X 3E – Gen 3
NSBDISCOV533NA1	Discovery 5X 3N – Gen 3 High Performance
NSBDISCOV82GIS1	Discovery 8X SDi – Gen 2+ "Standard Definition"
NSBDISCOV82GII1	Discovery 8X IDi – Gen 2+ "Improved Definition"
NSBDISCOV823IH1	Discovery 8X HDi – Gen 2+ "High Definition"
NSBDISCOV8QGI1	Discovery 8X QSi – Gen 2+ "Quick Silver" White Phosphor
NSBDISCOV833EA1	Discovery 8X 3E – Gen 3
NSBDISCOV833NA1	Discovery 8X 3N – Gen 3 High Performance
ACCESSORIES	
ANAMTM0003	Tripod with a Grip
ANAF18XLRM	IR850XLR Doubler - Enhances performance of IR850-XLR Illuminator
ANHCO00004	Hard Shipping/ Storage Case #102



JANUS 10X

Digital Night Vision Bi-Ocular

If you need a professional grade Digital Night Vision bi-ocular for law enforcement use, bird watching, hunting, security, nature observation, or water sports, look no further. The Janus is a professional Digital Night Vision Bi-Ocular with optical 10x or 15x magnification.

Sensitive to both near-infrared and visible light, the high performance CCD imaging system of the Janus provides round-the-clock observation. The Janus is effective regardless of light conditions – in daylight, natural lighting, and at nighttime.

Key features include: wireless remote control, detachable wide-angle adjustable long-range illuminator, and an optional Digital Recorder with SD card. The Janus is equipped with a standard NTSC/PAL video output function that makes it possible to connect to an external video monitor, or to record images for field documentation or training purposes. The device uses the same multi-pin connector to connect the optional digital video recorder and external power access.

Whether you want to use it for camping, hunting, law enforcement, boating, or security, the Armasight Janus will help you look out into the night, revealing a whole new world previously hidden by darkness.

- High-performance CCD camera
- IR850-XLR detachable extra long-range infrared illuminator
- Wireless remote control
- Analog video input (NTSC/PAL) and output (PAL)
- Digital video recorder with SD card (optional)
- Water resistant
- Limited Two-Year Warranty

JANUS 15X

Digital Night Vision Bi-Ocular

SPECS	JANUS 10X	JANUS 15X
MAGNIFICATION	10x	15x
LENS SYSTEM	108 mm, F/1.54	145 mm, F/1.8
FIELD OF VIEW	2.6° × 2°	2° × 1.5°
DIMENSIONS	316 × 100 × 76 mm (12.4 × 3.9 × 3.0")	344 × 102 × 91 mm (13.5 × 4.0 × 3.6")
WEIGHT	1.04 kg (2.29 lb)	1.25 kg (2.76 lb)

PART NO.	MODEL
DABJANBBX10PAL1	Janus 10X - High-Performance 10x Digital Night Vision Binocular Resolution 752x582; comes with IR850-XLR X-Long-Range Infrared Illuminator
DABJANBBX15PAL1	Janus 15X - High-Performance 15x Digital Night Vision Binocular Resolution 752x582; comes with IR850-XLR X-Long-Range Infrared Illuminator
ACCESSORIES	
ATVR000002	IRIS Wireless Head Mounted Display for High-Performance Digital and Thermal Devices
ANAF18XLRM	IR850XLR Doubler - Enhances performance of IR850-XLR Illuminator
ATAM000005	HD DVR - High-Definition Digital Recorder
ATAM000008	Extended Battery Pack - Extended Battery Pack with Rechargeable Batteries
ANAM000045	Extended Rail Adapter #85 - Dovetail Weaver Picatinny Rail Adapter
ANH0000004	Hard Shipping/ Storage Case #102
IALA00AMRF22001	AMRF2200 - Advanced Modular (Laser) Range Finder for LFR Clip-On systems, and High-Performance Digital and Thermal devices
ANAMTM0003	Tripod with a Grip



WWZ®

Night Vision Weapon Sight

Our line of Armasight Gen 1 Night Vision riflescopes is a collection of high-performance, mid-range Night Vision weapon sights that provide excellent observational, target acquisition, and aiming capabilities for the most demanding sports shooters, hunters, and security personnel.

Armasight Night Vision sights are arguably the most dependable, highest-performing weapon sights you can find in the Gen 1+ category. We have housed our top class optics and image intensifier tubes within ruggedly designed aluminum bodies.

Armasight Orion riflescopes are built with durable rubber-coated housings for improved grip and reliability. For improved accuracy and ergonomics, all Orion series scopes feature precision top wheel focus.

Our riflescopes are the best solution for any tactical shooter or hunter seeking to improve the accuracy of their shooting in dark environments.

- 4x or 5x magnification
- Shock-protected optics
- Rubberized body (Orion only)
- Ability to mount to standard Weaver rails
- Detachable, long-range infrared illuminator
- Limited two-year warranty

ORION®

Night Vision Weapon Sight

SPECS	WWZ	ORION 5X
MAGNIFICATION	4x	5x
LENS SYSTEM	90mm; F/1.4	108mm; F/1.6
FIELD OF VIEW	12°	10°
DIMENSIONS	323 × 98 × 115 mm (12.7 × 3.8 × 4.5")	323 × 104 × 118 mm (12.7 × 4.1 × 4.6")
WEIGHT	1.45 kg (3.2 lb)	1.7 kg (3.7 lb)

PART NO.	MODEL
NWWWZ00041111	WWZ - Gen 1+ (IR810 Illuminator included)
NWWORION051111	ORION 5X - Gen 1+ (IR810 Illuminator included)
ACCESSORIES	
IAIR850IR000004	IR850-XLR - Extra Long-Range Infrared Illuminator, Rechargeable Battery, and Charger
ANAF18XLRM	IR850XLR Doubler - Enhances performance of IR850-XLR Illuminator
ANAM000045	Extended Rail Adapter #85 - Dovetail Weaver Picatinny Rail Adapter
ANHCO00004	Hard Shipping/ Storage Case #102



VAMPIRE®

Night Vision Weapon Sight

The Armasight Vampire is built using our new, proprietary CORE™ (Ceramic Optical Ruggedized Engine) image tube, which includes double the resolution of Gen 1 devices. This provides flatter, clearer Night Vision images. The CORE™ platform offers ‘best in class’ resolution with 60-70 lp/mm, and increased photocathode sensitivity levels of upwards of 400µA/lm, providing image quality that rivals that of high-end Gen 2 image tubes, even in challenging ambient light conditions.

The body of the unit is made from solid aluminum, and is O-ring sealed and rubber coated for further protection. Like all Armasight scopes, the Vampire is nitrogen-treated and comes complete with batteries, a soft carrying case, a user manual, and all necessary hardware for solid mounting to a standard 7/8" Picatinny or Weaver-style rail.

The Vampire has multicoated all-glass lenses and a manually adjustable fine reticle that makes precise shot placement incredibly easy. This Night Vision riflescope is also water, dust, and sand-proof for increased reliability. Complete with tactical rails for lasers or illuminators (the high-power IR illuminator is included standard), the Armasight Vampire is ideal for the game hunter, tactical marksmen, or anyone looking for a compact, sturdy, lightweight Night Vision riflescope.

- CORE Technology
- Shock protected, all-glass IR transmission multicoated optics
- Illuminated reticle with brightness adjustment
- IR850-XLR Detachable Long-Range Infrared Illuminator
- Water and fog-resistant design
- Mounts to standard Weaver rails
- Limited Two-Year Warranty

SPECS	
MAGNIFICATION	3x
LENS SYSTEM	108 mm; F/1.5
FIELD OF VISION	10.5°
DIMENSIONS	275 × 87 × 95 mm (10.8 × 3.4 × 3.7")
WEIGHT	1.36 kg (3 lb)

PART NO.	MODEL
NMWWAMPIR3CCIC1	Vampire 3X - "CORE" IIT, 60-70 lp/mm with IR850-XLR Illuminator
ACCESSORIES	
IAIR850IR000004	IR850-XLR - Extra Long-Range Infrared Illuminator, Rechargeable Battery, and Charger
ANAF18XLRM	IR850XLR Doubler - Enhances performance of IR850-XLR Illuminator
ANAM000045	Extended Rail Adapter #85 - Dovetail Weaver Picatinny Rail Adapter
ANHCO00004	Hard Shipping/ Storage Case #102



NEMESIS[®]

Night Vision Weapon Sight

The Armasight Nemesis is the perfect solution for missions where the shooter requires additional distance between themselves and their target. Featuring a high-quality image intensifier tube, easy to use internal windage and elevation adjustments, and simple push button controls, the Armasight Nemesis will allow you to see beyond the expected in nighttime conditions. The Armasight Nemesis can be equipped with high-performance Green phosphor Gen 2+ IITs, or Gen 2 "Quick Silver", which provides users with natural B&W Night Vision displays.

The adjustable illuminated reticle is unique; no other Night Vision riflescope on the market has such well-defined (yet extremely thin) crosshairs that allow for this level of precise shot placement, even on exceptionally small targets. The Nemesis is fitted with a Picatinny/ Weaver mount that allows for highly accurate rail positioning, ensuring user comfort; three accessory mounting rails allow easy mounting of our included long-range IR illuminator and/or other compatible accessories. The Nemesis is water resistant, robust, lightweight, and engineered from aircraft aluminum.

- Shock-protected, all-glass IR transmission multicoated optics
- Bright source protection, Automatic Brightness Control (ABC)
- Mounts to standard Weaver rails
- Variable reticle brightness
- IR850-XLR Detachable extra long-range infrared illuminator
- Limited two-year warranty

SPECS	NEMESIS 4X	NEMESIS 6X
MAGNIFICATION	4x	6x
LENS SYSTEM	108 mm; F/1.5	160 mm; F/2.0
FIELD OF VIEW	10°	6.5°
DIMENSIONS	305 × 102 × 71 mm (12 × 4 × 2.8")	388 × 102 × 71 mm (15.3 × 4 × 2.8")
WEIGHT	1.2 kg (2.7 lb)	1.9 kg (4.2 lb)

PART NO.	MODEL
NRWNEMESI42GIS1	Nemesis 4X SDi – Gen 2+ "Standard Definition"
NRWNEMESI42GII1	Nemesis 4X IDi – Gen 2+ "Improved Definition"
NRWNEMESI4QGII1	Nemesis 4X QSi – Gen 2+ "Quick Silver" White Phosphor
NRWNEMESI62GIS1	Nemesis 6X SDi – Gen 2+ "Standard Definition"
NRWNEMESI62GII1	Nemesis 6X IDi – Gen 2+ "Improved Definition"
NRWNEMESI6QGII1	Nemesis 6X QSi – Gen 2+ "Quick Silver" White Phosphor
ACCESSORIES	
IAIR850IR000004	IR850-XLR - Extra Long-Range Infrared Illuminator, Rechargeable Battery, and Charger
ANAF18XLRM	IR850XLR Doubler - Enhances performance of IR850-XLR Illuminator
ANAM000045	Extended Rail Adapter #85 - Dovetail Weaver Picatinny Rail Adapter
ANHCO00004	Hard Shipping/ Storage Case #102



FLIRVULCAN®

Night Vision Weapon Sight

FLIR Vulcan scopes represent the apex of Night Vision weapon sight technology. They include image intensifier options featuring Gen 2+ White phosphor Quick Silver, Gen 3 white phosphor Ghost, and mil-spec Gen 3P. Our new optical design sets the industry standard, and these devices are significantly more compact than before.

The Vulcan comes with a host of features, including wireless remote control, the ability to use either a CR123A or AA battery, and a quick-release Picatinny mount with locks. The Vulcan can be secured to an adjustable mount that fits Weaver or Picatinny rails, and can be mounted in seconds without tools.

The Vulcan has multicoated all-glass lenses, and an internally adjustable fine reticle that makes precise shot placement incredibly easy. This Night Vision riflescope is also water, dust, and sand-proof for increased reliability. Complete with tactical rails for lasers or illuminators (the high power IR illuminator is included as standard), the FLIR Vulcan is ideal for the dedicated game hunter, tactical marksmen, or anyone that needs a compact, lightweight Night Vision riflescope.

The FLIR Vulcan is a night vision weapon sight that provides excellent target acquisition and aiming capabilities for the demanding sports shooter, game hunter, military, law enforcement, or security personnel.

- Shock protected, all-glass IR transmission multicoated optics
- Detachable long-range infrared illuminator
- Powered by a single CR123A Lithium or AA battery
- Quick-Release mount
- Mounts to standard Weaver rails
- Limited two-year warranty

SPECS	VULCAN 4.5X	VULCAN 6X	VULCAN 8X
MAGNIFICATION	4.5x	6x	8x
LENS SYSTEM	108 mm; F/1.54	145 mm; F/1.8	192 mm; F/2.13
FIELD OF VIEW	9°	7°	5.4°
DIMENSIONS	204 × 97 × 91 mm (8.0 × 3.8 × 3.6")	238 × 104 × 95 mm (9.4 × 4.1 × 3.7")	310 × 108 × 103 mm (12.2 × 4.2 × 4.1")
WEIGHT	1.08 kg (2.4 lb)	1.19 kg (2.6 lb)	1.43 kg (3.1 lb)



PART NO.	MODEL
NRWVULCAN429IS1	Vulcan 4.5X SDi MG – Gen 2+ "Standard Definition" with Manual Gain
NRWVULCAN429II1	Vulcan 4.5X IDi MG – Gen 2+ "Improved Definition" with Manual Gain
NRWVULCAN429IH1	Vulcan 4.5X HDi MG – Gen 2+ "High Definition" with Manual Gain
NRWVULCAN4Q9II1	Vulcan 4.5X QSi MG – Gen 2+ "Quick Silver" White Phosphor with Manual Gain
NRWVULCAN4G9EA1	Vulcan 4.5X Ghost E MG – Gen 3 "Ghost" White Phosphor with Manual Gain
NRWVULCAN439EA1	Vulcan 4.5X 3E MG – Gen 3 with Manual Gain
NRWVULCAN439NA1	Vulcan 4.5X 3N MG – Gen 3 High Performance with Manual Gain
NRWVULCAN629IS1	Vulcan 6X SDi MG – Gen 2+ "Standard Definition" with Manual Gain
NRWVULCAN629II1	Vulcan 6X IDi MG – Gen 2+ "Improved Definition" with Manual Gain
NRWVULCAN629IH1	Vulcan 6X HDi MG – Gen 2+ "High Definition" with Manual Gain
NRWVULCAN6Q9II1	Vulcan 6X QSi MG – Gen 2+ "Quick Silver" White Phosphor with Manual Gain
NRWVULCAN6G9EA1	Vulcan 6X Ghost E MG – Gen 3 "Ghost" White Phosphor with Manual Gain
NRWVULCAN639EA1	Vulcan 6X 3E MG – Gen 3 with Manual Gain
NRWVULCAN639NA1	Vulcan 6X 3N MG – Gen 3 High Performance with Manual Gain

PART NO.	MODEL
NRWVULCAN829IH1	Vulcan 8X HDi MG – Gen 2+ "High Definition" with Manual Gain
NRWVULCAN8Q9II1	Vulcan 8X QSi MG – Gen 2+ "Quick Silver" White Phosphor with Manual Gain
NRWVULCAN8G9EA1	Vulcan 8X Ghost E MG – Gen 3 "Ghost" White Phosphor with Manual Gain
NRWVULCAN839EA1	Vulcan 8X 3E MG – Gen 3 with Manual Gain
NRWVULCAN839NA1	Vulcan 8X 3N MG – Gen 3 High Performance with Manual Gain
ACCESSORIES	
IAIR850IR000004	IR850-XLR - Extra Long-Range Infrared Illuminator, Rechargeable Battery, and Charger
ANAF18XLRM	IR850XLR Doubler - Enhances performance of IR850-XLR Illuminator
ANAM000045	Extended Rail Adapter #85 - Dovetail Weaver Picatinny Rail Adapter
ANHCO00004	Hard Shipping/ Storage Case #102



DRONE PRO 10X

Digital Night Vision Riflescope

The Drone Pro professional digital night vision riflescope is one of the most advanced scopes in its class. Sensitive to both near-infrared and visible light, the high performance CCD imaging system of the Drone PRO provides round-the-clock and all weather target detection and discrimination. The Drone PRO is effective regardless of light conditions – in daylight, natural lighting, and at nighttime. Drone Pro scope is an ideal product for professional and amateur use, such as for hunting, security, sports shooting, and nighttime observation.

Key features include: wireless remote control, detachable wide angle adjustable long-range illuminator, and a quick-release Picatinny mount with locks. The Drone PRO is equipped with a standard NTSC/PAL video output function that makes it possible to connect to an external video monitor, or to record images for field documentation or training purposes. The device uses the same multi-pin connector to connect the optional digital video recorder and external power access.

To accommodate individual user needs, the Drone PRO has a variety of digitally controlled options, including customizable display brightness, reticle pattern, and reticle color.

The quick-release mount of the Drone PRO fits any Picatinny, MIL-STD-1913, or Weaver weapon rail. The mount's lever-cam clamping device ensures easy, quick, and reliable mounting and removal.

- High-performance CCD camera
- IR850-XLR detachable extra long-range infrared illuminator
- Analog video input (NTSC/PAL) and output (PAL)
- Up to 3 hours of operation on two lithium batteries
- Filled with dry nitrogen to prevent internal fogging
- Water resistant
- Limited two-year warranty

DRONE PRO 15X

Digital Night Vision Riflescope

SPECS	DRONE PRO 10X	DRONE PRO 15X
MAGNIFICATION	10x	15x
LENS SYSTEM	108 mm, F/1.54	145 mm, F/1.8
FIELD OF VIEW	2.6° × 2°	2° × 1.5°
DIMENSIONS	260 × 85 × 76 mm (10.2 × 3.4 × 3.0")	290 × 91 × 107 mm (11.4 × 3.6 × 4.2")
WEIGHT	1.02 kg (2.2 lb)	1.3 kg (2.87 lb)

PART NO.	MODEL
DARDROPBB10PAL1	Drone Pro 10X - High-Performance 10x Digital Night Vision Rifle Scope Resolution 752x582; comes with IR850-XLR X-Long-Range Infrared Illuminator
DARDROPBB15PAL1	Drone Pro 15X - High-Performance 15x Digital Night Vision Rifle Scope Resolution 752x582; comes with IR850-XLR X-Long-Range Infrared Illuminator
ACCESSORIES	
ATVR000002	IRIS Wireless Head Mounted Display for High-Performance Digital and Thermal Devices
ANAF18XLRM	IR850XLR Doubler - Enhances performance of IR850-XLR Illuminator
ATAM000005	HD DVR - High-Definition Digital Recorder
ATAM000008	Extended Battery Pack - Extended Battery Pack with Rechargeable Batteries
ANAM000045	Extended Rail Adapter #85 - Dovetail Weaver Picatinny Rail Adapter
ANH0000004	Hard Shipping/ Storage Case #102
IALA00AMRF22001	AMRF2200 - Advanced Modular (Laser) Range Finder for LFR Clip-On systems, and High-Performance Digital and Thermal devices
ANAMTM0003	Tripod with a Grip



FLIR CO-MINI™**Night Vision Clip-On System**

Designed for short-to-medium range observation, the FLIR CO-MINI is the most compact commercially available Clip-On Night Vision Device. The CO-MINI uses image intensification technology and is designed to convert most low-to-mid power daytime sights, scopes, or binoculars into Night Vision devices. The CO-MINI can be mounted in seconds without tools. It can be attached in front of a day rifle scope (using its quick-release Picatinny mount) or directly onto the day scope objective lens with the included adaptor.

The CO-MINI is suitable for use with most commercial and military specification daytime sights, telescopes, or binoculars (up to 6X magnification). Because the CO-MINI can be easily mounted in front of the user's existing day scope, comfort is never sacrificed, while shot release and follow-through remain accurate. It really is as simple as mount and shoot!

The FLIR CO-MINI is intended primarily for use by demanding hunters and in short-range warfare, where field of view and ease of use is more important than high magnification. Packed with innovative and important features like variable gain control, automatic bright light shut-off, and wireless remote control, the CO-MINI is designed to make quick, intuitive shooting just as easy at night as it is during the day.

The FLIR CO-Mini can be equipped with high-performance Gen 2+ and Gen 3 variants image intensifier tubes using Green phosphor or "Quick Silver" and "Ghost" image intensifier tubes, which provide users with natural B&W Night Vision image.

- Simple and quick conversion of daytime scope, sight or binoculars to Night Vision
- Mounts in front of rifle scope with no re-zeroing required
- Equipped with Wireless Remote Control
- IR850-XLR detachable extra long-range infrared illuminator
- Powered by a single alkaline 1.5V AA or 3V CR123A lithium battery
- Quick-Release Mount
- Limited two-year warranty

SPECS

MAGNIFICATION	1x
LENS SYSTEM	38 mm; F/1.25
FIELD OF VIEW	22°
EXIT PUPIL	27.5 mm
DIMENSIONS	125 × 68 × 55 mm (4.9 × 2.7 × 2.2")
WEIGHT	0.43 kg (0.95 lb)

PART NO.	MODEL
NSCCOMINI129II1	CO-Mini IDi MG – Gen 2+ "Improved Definition" with Manual Gain
NSCCOMINI129IH1	CO-Mini HDi MG – Gen 2+ "High Definition" with Manual Gain
NSCCOMINI1Q9II1	CO-Mini QSi MG – Gen 2+ "Quick Silver" White Phosphor with Manual Gain
NSCCOMINI1G9EA1	CO-Mini Ghost E MG – Gen 3 "Ghost" White Phosphor with Manual Gain
NSCCOMINI139EA1	CO-Mini 3E MG – Gen 3 with Manual Gain
NSCCOMINI139NA1	CO-Mini 3N MG – Gen 3 High Performance with Manual Gain
ACCESSORIES	
ANAM000009	Mounting System #1 for Daytime Optics with 25.4-30 mm Objective Diameter
ANAM000010	Mounting System #2 for Daytime Optics with 38-42 mm Objective Diameter
ANAM000011	Mounting System #3 for Daytime Optics with 46.7-50 mm Objective Diameter
ANAM000012	Mounting System #4 for Daytime Optics with 56-58.7 mm Objective Diameter
ANAM000013	Mounting System #6 for Daytime Optics with 62 mm Objective Diameter
ANAM000031	Weaver Mount #60 replaces QRM to weaver base for IR Illuminator
ANAM000045	Extended Rail Adapter #85 - Dovetail Weaver Picatinny Rail Adapter
ANHC000004	Hard Shipping/ Storage Case #102
ANAF18XLRM	IR850XLR Doubler - Enhances performance of IR850-XLR Illuminator



FLIR **CO-X**

Night Vision Clip-On System

FLIR **CO-MRX**

Night Vision Clip-On System

The FLIR CO-X/ CO-MRX is one of the most advanced Night Vision Clip-On systems for mid-range night shooting on the market today, and truly stands out from the competition when it comes to clarity, versatility, reliability, function, and value.

The CO-X/ CO-MRX converts your existing day scope into a Night Vision device, providing excellent target acquisition and aiming capabilities for the demanding sports shooter, hunter, military professional, or law enforcement and security personnel. The CO-X/ CO-MRX simply mounts in front of your existing day scope, with no re-zeroing required.

The FLIR CO-X/ CO-MRX is fitted with a locking, quick-disconnect mounting system, which provides the user with a simple, fast way to attach or detach the unit on any standard Weaver or Picatinny rail. The CO-X is recommended for use with day scopes of up to 6X magnification. The CO-MRX is equipped with a large 40mm output lens for unequalled light transmission and recommended for use with day scopes of up to 12X magnification (2.5X to 8X is optimum).

- Simple, quick conversion of daytime scope to Night Vision device
- Mounts in front of any daytime scope, no re-zeroing required
- Fast Catadioptric Front Lens System
- IR850-XLR detachable extra long-range infrared illuminator
- Quick-Release Mount
- Limited two-year warranty

SPECS	CO-X	CO-MRX
MAGNIFICATION	1x	1x
LENS SYSTEM	80 mm; F/1.44	80 mm; F/1.44
FIELD OF VIEW	12°	12°
EXIT PUPIL	21 mm	40 mm
DIMENSIONS	150 × 100 × 83 mm (5.9 × 3.9 × 3.2")	189 × 104 × 90 mm (7.4 × 4.1 × 3.5 in)
WEIGHT	0.76 kg (1.7 lb)	1.04 kg (2.3 lbs)

PART NO.	MODEL
NSCC0X00012MIS1	CO-X SDi MG – Gen 2+ "Standard Definition" with Manual Gain
NSCC0X00012MII1	CO-X IDi MG – Gen 2+ "Improved Definition" with Manual Gain
NSCC0X00012QMI1	CO-X HDi MG – Gen 2+ "High-Definition" with Manual Gain
NSCC0X00012MIH1	CO-X QSi MG – Gen 2+ "Quick Silver" White Phosphor with Manual Gain
NSCC0X0001GGEA1	CO-X Ghost E MG – Gen 3 "Ghost" White Phosphor with Manual Gain
NSCC0X000133EA1	CO-X 3E – Gen 3
NSCC0X000133NA1	CO-X 3N – Gen 3 High Performance
NSCCOMRX0129II1	CO-MRX IDi MG – Gen 2+ "Improved Definition" with Manual Gain
NSCCOMRX0129IH1	CO-MRX HDi – Gen 2+ "High Definition"
NSCCOMRX01Q9II1	CO-MRX QSi MG – Gen 2+ "Quick Silver" White Phosphor with Manual Gain
NSCCOMRX01G9EA1	CO-MRX Ghost E – Gen 3 "Ghost" White Phosphor
NSCCOMRX0139EA1	CO-MRX 3E – Gen 3
NSCCOMRX0139NA1	CO-MRX 3N – Gen 3 High Performance
ACCESSORIES	
ANAM000009	Mounting System #1 for Daytime Optics with 25.4-30 mm Objective Diameter
ANAM000010	Mounting System #2 for Daytime Optics with 38-42 mm Objective Diameter
ANAM000011	Mounting System #3 for Daytime Optics with 46.7-50 mm Objective Diameter
ANAM000012	Mounting System #4 for Daytime Optics with 56-58.7 mm Objective Diameter
ANAM000013	Mounting System #6 for Daytime Optics with 62 mm Objective Diameter
ANAM000031	Weaver Mount #60 replaces QRM to weaver base for IR Illuminator
ANAM000045	Extended Rail Adapter #85 - Dovetail Weaver Picatinny Rail Adapter
ANHCO00004	Hard Shipping/ Storage Case #102
ANAF18XLRM	IR850XLR Doubler - Enhances performance of IR850-XLR Illuminator



FLIR CO-LR®

Night Vision Clip-On System

The FLIR CO-LR (Clip On – Long Range) is a night vision unit that mounts in front of any existing day scope, converting the scope into a night vision-capable device with a viewing range of up to 1000 yards. Suitable for use with most commercial and military specification daytime scopes (up to 12X magnification), the CO-LR can be mounted/dismounted on any standard Picatinny rail in seconds, with no special tools required. Because the CO-LR can be mounted to an existing day scope, no re-zeroing is required. The CO-LR allows the user to maintain consistent positioning and shooting accuracy, all while using a completely familiar day scope.

The CO-LR is packed with innovative features like variable gain control, bright light shut-off, and a wireless remote control. This night vision clip-on is designed to make long-range night shooting just as easy and accurate as daytime shooting in the same terrain.

The FLIR CO-LR LRF can be used with a laser range finder (AMRF2200). Distance measurements are displayed on the rangefinders indicator and in the FOV of the connected NV device.

- Simple and quick conversion of a day scope to Night Vision Device
- Mounts in front of riflescope with no re-zeroing required
- Precise (1 m resolution) laser rangefinder (CO-LR LRF)
- Equipped with wireless remote control
- Powered by a single alkaline 1.5V AA or 3V CR123A lithium battery
- Bright light cut-off system
- Limited two-year warranty

FLIR CO-LR-LRF®

Night Vision Clip-On System

SPECS

MAGNIFICATION	1x
LENS SYSTEM	108 mm; F/1.54
FIELD OF VIEW	9°
EXIT PUPIL	40 mm
DIMENSIONS	235 × 97 × 80 mm (9.25 × 3.8 × 3.14")
WEIGHT	0.91 kg (2.0 lb)

PART NO.	MODEL
NSCCOLR00129II1	CO-LR IDi MG – Gen 2+ "Improved Definition" with Manual Gain
NSCCOLR00129IH1	CO-LR HDi MG – Gen 2+ "High Definition" with Manual Gain
NSCCOLR001Q9II1	CO-LR QSi MG – Gen 2+ "Quick Silver" White Phosphor with Manual Gain
NSCCOLR001G9EA1	CO-LR Ghost E MG – Gen 3 "Ghost" White Phosphor with Manual Gain
NSCCOLR00139EA1	CO-LR 3E MG – Gen 3 with Manual Gain
NSCCOLR00139NA1	CO-LR 3N MG – Gen 3 High Performance with Manual Gain
NSCCOLRF0129II1	CO-LR-LRF IDi MG – Gen 2+ "Improved Definition" with Manual Gain and Laser Range Finder Capabilities (Laser Range Finder is sold separately)
NSCCOLRF0129IH1	CO-LR-LRF HDi MG – Gen 2+ "High Definition" with Manual Gain and Laser Range Finder Capabilities (Laser Range Finder is sold separately)
NSCCOLRF01Q9II1	CO-LR-LRF QSi MG – Gen 2+ "Quick Silver" White Phosphor with Manual Gain and Laser Range Finder Capabilities (Laser Range Finder is sold separately)
NSCCOLRF01G9EA1	CO-LR-LRF Ghost E MG – Gen 3 "Ghost" White Phosphor with Manual Gain and Laser Range Finder Capabilities (Laser Range Finder is sold separately)
NSCCOLRF0139EA1	CO-LR-LRF 3E MG – Gen 3 with Manual Gain and Laser Range Finder Capabilities (Laser Range Finder is sold separately)
NSCCOLRF0139NA1	CO-LR-LRF 3N MG – Gen 3 High Performance with Manual Gain and Laser Range Finder Capabilities (Laser Range Finder is sold separately)
ACCESSORIES	
IALA00AMRF22001	AMRF2200 - Advanced Modular (Laser) Range Finder for LFR Clip-On systems, and High-Performance Digital and Thermal devices
ANAF18XLRM	IR850XLR Doubler - Enhances performance of IR850-XLR Illuminator
ANAM000021	FSRS (Front Scope Rail System) #38 - Mounts Clip-On Day/ Night system to firearm
ANAM000045	Extended Rail Adapter #85 - Dovetail Weaver Picatinny Rail Adapter
ANHCO00004	Hard Shipping/ Storage Case #102



FLIR CO-XLR-LRF

Night Vision Clip-On System

The FLIR CO-XLR LRF, the most advanced Night Vision Clip-On in the series, pushes the boundaries of night vision systems further than they've ever gone. The CO-XLR LRF (Clip On – Extra Long-Range) is a night vision unit that mounts in front of any existing day scope, converting the scope into a night vision-capable device with a viewing range of up to 1,500 yards. Suitable for use with most commercial and military specification daytime scopes (up to 16X magnification), the CO-XLR LRF can be mounted/dismounted on any standard Picatinny rail in seconds, with no special tools required. Because the CO-XLR LRF can be mounted in front of your existing day scope, no re-zeroing is required. The CO-XLR LRF allows the user to maintain consistent positioning and shooting accuracy, all while maintaining the use of a fully familiar day scope.

The CO-XLR LRF housing is designed to withstand any environmental condition. The CO-XLR LRF is packed with innovative features like variable gain control, bright light shutoff, and wireless remote control. This night vision clip-on is designed to make long-range night shooting just as easy and accurate as daytime shooting in the same terrain.

The CO-XLR LRF can be equipped with high-performance, Gen 2+ and Gen 3 variants image intensifier tubes, using either Green phosphor or "Quick Silver" and "Ghost" image intensifier tubes, which provide users with natural B&W images.

The CO-XLR LRF can be used with a laser range finder (AMRF2200). Distance measurements are displayed on the rangefinders indicator and in the FOV of connected NV device.

- Simple and quick conversion of any day scope into a Night Vision Device
- Mounts in front of riflescope with no re-zeroing required
- Precise (1m resolution) Laser Range Finder capability
- Equipped with wireless remote control
- Powered by a single alkaline 1.5V AA or 3V CR123A lithium battery
- Quick-release mount
- Bright light cut-off system
- Used with Advanced Modular Range-Finder
- Limited two-year warranty

SPECS

MAGNIFICATION	1x
LENS SYSTEM	145 mm; F/1.8
FIELD OF VIEW	7°
EXIT PUPIL	40 mm
DIMENSIONS	304 × 104 × 94 mm (12.0 × 4.1 × 3.7")
WEIGHT	1.3 kg (2.86 lb)

PART NO.	MODEL
NSSCCOXLRF129IH1	CO-XLR-LRF HDi MG – Gen 2+ "High Definition" with Manual Gain and Laser Range Finder Capabilities (Laser Range Finder is sold separately)
NSSCCOXLRF1Q9I1	CO-XLR-LRF QSi MG – Gen 2+ "Quick Silver" White Phosphor with Manual Gain and Laser Range Finder Capabilities (Laser Range Finder is sold separately)
NSSCCOXLRF1G9EA1	CO-XLR-LRF Ghost E MG – Gen 3 "Ghost" White Phosphor with Manual Gain and Laser Range Finder Capabilities (Laser Range Finder is sold separately)
NSSCCOXLRF139EA1	CO-XLR-LRF 3E MG – Gen 3 with Manual Gain and Laser Range Finder Capabilities (Laser Range Finder is sold separately)
NSSCCOXLRF139NA1	CO-XLR-LRF 3N MG – Gen 3 High Performance with Manual Gain and Laser Range Finder Capabilities (Laser Range Finder is sold separately)
ACCESSORIES	
IALA00AMRF22001	AMRF2200 - Advanced Modular (Laser) Range Finder for LRF Clip-On systems, and High-Performance Digital and Thermal devices
ANAF18XLRM	IR850XLR Doubler - Enhances performance of IR850-XLR Illuminator
ANAM000021	FSRS (Front Scope Rail System) #38 - Mounts Clip-On Day/ Night system to firearm
ANAM000045	Extended Rail Adapter #85 - Dovetail Weaver Picatinny Rail Adapter
ANHC000004	Hard Shipping/ Storage Case #102



IR850-XLR*

Long-Range IR Illuminator

Armasight IR850-XLR extra long-range infrared illuminator provides greater image-intensified viewing capabilities for operations in little to no ambient light.

The powerful IR850-XLR model comes standard equipped with a rechargeable battery and charger unit. An optional A-Focal doubler for IR850-XLR doubles the distance of IR beam for ultra-long-distance observation.

Our infrared illuminators provide wide-range beam angle adjustment, which drastically improves the performance of the IR illuminator and extends the user's nighttime visibility range.

- Powerful, long-range infrared illuminator
- High power, IR-emitting Diode
- Precise adjustment of beam direction
- Invisible to the human eye
- Can be mounted on the Weaver rail or used as a handheld device

SPECS

IR EMITTER TYPE	LED
POWER	1,000 mW
COMPATIBLE NIGHT VISION DEVICES:	Gen 1, CORE, Gen2, Gen 3, Digital
ILLUMINATION RANGE	Up to 1,000 m
OVERALL DIMENSIONS (W/O MOUNT)	150 × 46 × 46 mm (5.9 × 1.8 × 1.8")
WEIGHT (W/O MOUNT AND BATTERY)	210 g (7.4 oz)

PART NO.	MODEL
IAIR850IR000004	IR850-XLR - Extra Long-Range Infrared Illuminator, Rechargeable Battery, and Charger
ACCESSORIES	
ANAF18XLRM	IR850XLR Doubler - Enhances performance of IR850-XLR Illuminator
ANRA000001	Dovetail#21 - Weaver Transfer Piece to attach IR Illuminator

MSI8000*

Universal Long-Range Flashlight

Different species of animals see colors differently. With red, green and white interchangeable LED modules available for MSI8000 flashlight, you can choose the specific color for your intended game. NO filtered lenses are used. By using a clear lens and colored LED, you are assured to reach maximal distance from your illumination.

MSI8000 comes standard equipped with a rechargeable battery and charger unit. Optional Weapon Set includes a wireless remote control and weapon mount. An optional A-Focal Doubler doubles the distance of illumination for ultra-long-distance observation.

- Interchangeable LED modules (IR, White, Green, Red)
- Power adjustment
- Wide-range beam angle adjustment
- Can be used as a hand-held device or mounted on the Weaver rail

SPECS	IR	WHITE	GREEN (OPTIONAL)	RED (OPTIONAL)
IR EMITTER TYPE	LED	LED	LED	LED
OUTPUT	1300 mW	610 lm	160 lm	150 lm
PEAK WAVELENGTH	850 nm	--	528 nm	625 nm
ILLUMINATION RANGE	Up to 1000 m			
SIZE	180x46x46 mm (7.1x1.8x1.8 in)			
WEIGHT (W/O BATTERY)	262 g (9.2 oz)			

PART NO.	MODEL
IAIFAION000001	MSI8000 - Extra Long-Range Multi Functional Flashlight (comes standard with "White Light" and "Infrared Illuminator" replacements)
ACCESSORIES	
ANLDGREEN1	"Green Light" replacement
ANLD00RED1	"Red Light" replacement
ANAMMF001	Weapon Kit
ANAF18XLRM	Doubler - Enhances performance of MSI8000 Illuminator





DIRECT VIEW & LASER SYSTEMS

AIM PRO[®]

Advanced Integrated Mount

AIM PRO-L[®]

Advanced Integrated Mount

The AIM PRO is the latest evolution of the Armasight AIM. The AIM (Advanced Integrated Mount) presents a revolutionary new concept of Night Vision targeting. This Night Vision accessory allows the operator to convert the monocular into a weapon sight. The AIM is incorporated into a low-profile housing that has an integral MIL-STD-1913 Picatinny rail grabber mount on the underside, and a dovetail mount on the top. By mounting the AIM onto your rifle and fitting it with either a Night Vision monocular or AIM optional day optic, the AIM can be bore-sighted to your rifle; the operator can switch between day and night modes as required, without having to readjust.

Unlike conventional systems that require the Night Vision unit to be mounted behind a day optic, the AIM projects the reticle directly into the Night Vision monocular lens. In practice, what this means is that there is no longer a reduced field of view through the Night Vision device, or any shadowed area that is difficult to see through (caused by conventional red-dot sights optics or outer edges). A small "HUD"-type prism on the front of the AIM unit projects a 65MOA "Circle," as well as a single 3.2MOA center aiming "Dot," directly into the Night Vision lens.

The Armasight AIM PRO-L allows the user to mount a 3x Night Vision monocular directly onto their weapon for an extended shooting range.

The adaptability of the AIM PRO to virtually any Night Vision monocular inherently makes it a "critical need" item for all law enforcement and military personnel, hunters, and professional shooters.

- Converts standard Night Vision monoculars into passive Night Vision weapon sights
- AIM eliminates the need for infrared laser or co-witnessed red dot sight
- No obstructing optics or parts in your field of view
- The only solution providing 100% full field of view
- Optional 3.5x daytime aiming solution
- Fits any MIL-STD-1913 Picatinny or Weaver rails with adjustable, locking, quick-detach mount

SPECS	AIM PRO	AIM PRO-L
"CIRCLE WITH DOT" RETICLE SIZE	65±2	65±2
ADJUSTMENT PRECISION RANGE (DEG. OF ARC)	±1,5	±1,5
RETICLE ILLUMINATION ADJUSTMENTS	digital	digital
LEVELS OF RETICLE BRIGHTNESS	11	11
IMMERSION	1 m for 30 minutes	1 m for 30 minutes
OVERALL DIMENSIONS	169 × 87 × 42 mm (6.6 × 3.4 × 1.6")	270 × 87 × 42 mm (1.6 × 3.4 × 1.6")
WEIGHT	180 g (6.3 oz)	252 g (8.9 oz)

PART NO.	MODEL
ANKI000032	AIM PRO - Advanced Integrated Mount Pro
ANKI000049	AIM PRO-L - Advanced Integrated Mount Pro Long
ACCESSORIES	
ANKI000046	Adapter Ring #62 - Adapter Ring to attach NV monocular onto AIM-Pro and AIM-Pro-L
ANKI000048	AIM 3X Booster - Day-Time 3x Magnifier for AIM-Pro



MCS[®]

Miniature Collimating Sight

The Armasight MCS (Miniature Collimating Sight) is a passive targeting micro LED collimating sight for rapid, “both-eyes open” target acquisition. The MCS is rugged, lightweight, and designed to mount onto a variety of existing magnified day optics as well as MIL-STD-1913 Picatinny and Weaver-style rails.

The Armasight MCS is the only sight on the market in its class that features a dual reticle pattern. The user can select a 3.5 MOA “Dot” reticle or 20 MOA “Ring” reticle pattern, depending on mission requirements. The MCS is compatible with Night Vision devices of all generations. Reticle intensity is regulated by an automatic brightness control sensor, which can also be overridden by the user to adjust the brightness mode as required.

The MCS is designed to significantly improve accuracy and efficiency of virtually any weapon, from handguns and pistols to assault rifles and light machine guns. The compact size and versatility of the MCS makes it an ideal secondary/backup optical sight. Accurate and reliable, the Armasight MCS features 1.2 MOA/ click windage and 1.5 MOA/ click adjustments. A unique optical design allows for a parallax-free, “always on the center” reticle.

The unit has been tested against salt, fog, dust, vibration, and significant drops. It has also been fired from a variety of firearms for thousands of rounds. The MCS features a unique pivot lens cover with anti-reflective coating, and works on a single, easy to replace CR2032 3V battery.

- Tactile click stops for windage & elevation adjustments
- User configurable open or tube sight mode
- Riflescope-mounted or Weaver-mounted variations
- Battery change with no re-zeroing required
- Large heads-up display with wide field of view
- Limited two-year warranty

SPECS	
MAGNIFICATION	1X (unity)
EXIT PUPIL (MM)	20 × 15
INTERCHANGEABLE RETICLE PATTERN:	
- Dot (MOA)	3.5 (10 cm at 100 m)
- Circle (MOA)	20 (60 cm at 100 m)
RETICLE BRIGHTNESS ADJUSTMENT	Auto / Manual (MAX or MIN positions)
MOUNTING SYSTEM	for Picatinny Rail or for ACOG 4x32 (Trijicon) riflescope
DIMENSIONS (MM/IN):	
- Ver. for Picatinny rail	48 × 40 × 47 mm (1.9 × 1.6 × 1.8")
- Ver. for ACOG 4x32	48 × 44 × 52 mm (1.9 × 1.7 × 2.0")
WEIGHT	65 g (2.3 oz)

PART NO.	MODEL
DAS01XX25MCSBLC	MCS Black Color
DAS01XX25MCSTAN	MCS Tan Color
ACCESSORIES	
ANAM000017	Riser 1.5 #55 for MCS



DRAKOS®

Multi-spectral Laser
Aiming/Illumination Device

The Armasight Drakos is the new series of an innovative, rugged, multi-spectral Class I near-infrared and visible/near-infrared laser aiming devices. It is designed to mount via a locking quick-release MIL-STD-1913 rail grabber, onto a variety of kinetic weapons for day, low-light, and nighttime targeting. The Drakos is equipped with a wireless remote control; the laser operates on either a single CR123A 3V lithium or AA 1.5V battery, and the battery compartment adapter comes standard, which provides more than two thousand two-second activations of the lasers. The Drakos series is designed to withstand the kinetic recoil of 0.50 caliber and .338 caliber Lapua ammunition. The Armasight Drakos' performance level, along with its adaptability to virtually any Night Vision device, inherently makes it a "critical need" item for all law enforcement professionals, military personnel, hunters, and professional shooters.

- Tactile click stops for windage & elevation adjustments
- Rapid active target acquisition
- True Night Vision compatible mode
- Utilizes single CR123A lithium battery or AA Alkaline, adapter included
- Aiming lasers are co-boresighted
- Will not cause damage to eyes
- Limited Two-Year Warranty

SPECS	DRAKOS	DRAKOS-I	DRAKOS-II
WAVELENGTH	850 nW	850 / 850 nW	850 / 650 nW
LASER OUTPUT POWER (MAX)	0.7 mW	0.7 mW	0.7 / 0.9 mW
OPERATING DISTANCE	800 m	800 m	800 / 200 m
AIMING DOT SIZE	50 mm (at 100m)	50 mm (at 100m)	50 mm (at 100m)
OVERALL DIMENSIONS	110 × 67 × 39 mm (4.3 × 2.6 × 1.5")	110 × 67 × 39 mm (4.3 × 2.6 × 1.5")	110 × 67 × 39 mm (4.3 × 2.6 × 1.5")
WEIGHT	198 g (7 oz)	220 g (7 oz)	220 g (7.7 oz)

PART NO.	MODEL
IAIR000LP000001	Drakos - IR Laser Pointer with Quick-Release Mount and Wireless Remote Control
IAIR001LP000001	Drakos-I - Dual Chanel: IR Laser Pointer & IR 850 Illuminator with Quick-Release Mount and Wireless Remote Control
IAIR002LP000001	Drakos-II - Dual Chanel: IR Laser Pointer & Visible Red Laser Pointer with Quick-Release Mount and Wireless Remote Control



T-MAIM®

Tactical Multi-spectral
Aiming/Illumination Module

The T-MAIM Tactical Multispectral Aiming and Illumination Module is a CLASS IIIb laser that consists of a visible aiming laser, a near-infrared (near-IR) aiming laser, and a focusable near-IR Illuminator. The function of the T-MAIM is to provide an operator with highly collimated aiming lasers for precision aiming and targeting both with the naked eye in low light conditions and with image intensified Night Vision devices in nighttime applications. The focusable near-IR Illuminator provides the user with the ability to flood the area of interest with invisible near infrared light.

The T-MAIM can be operated in a variety of modes with single lasers or multiple lasers concurrently. The visible and near-IR aiming lasers can be boresighted to the weapon using unique ballistic differential adjustment ports using the onboard tool. The output power of the T-MAIM can be adjusted from approximately 100 µW to 25 mW electronically across 256 discrete intervals. Additionally, the aiming lasers can be operated via a user-chosen switch, in either a constant wave or 4 Hz pulsed mode. Depending on the laser mode selected, the T-MAIM can be used either with the naked eye in low light conditions, or with image intensified Night Vision devices in dark environments. The T-MAIM can be used in either a handheld mode with the operator activating the “FIRE” button, or in a weapon-mounted configuration using the integrated MIL-STD-1913 rail grabber assembly on the unit.

The T-MAIM is also equipped with a MIL-STD-1913 rail set at the 10 o'clock position, which allows the operator to attach a tactical flashlight or navigation light to provide illumination in low light conditions.

- Rapid active target acquisition
- True night vision compatible mode
- Adjustable output power
- User selectable constant wave or pulsed modes of aiming lasers
- Two tactical remote switches (including SAFETY remote switch)
- Aiming lasers are co-boresighted
- Unique ballistic differential adjustment ports
- Limited two-year warranty

SPECS	IR LASER	VISIBLE LASER	IR ILLUMINATOR
CLASS	IIIa (Low), IIIb (High)	IIIa	IIIb
OUTPUT POWER	100µW (Low), 25mW (High)	4.0 mW	500µW (Low), 25mW (High)
DIVERGENCE	0.5 mRad	0.8 mRad	1-108 mRad
WAVELENGTH	820 nm – 850 nm	620 nm – 650 nm	820 nm – 850 nm
OPERATING DISTANCE	>200 Meters (Low), 2,000 Meters (High)	>25 Meters in Direct Sunlight	>100 Meters (Low), 2,000 Meters (High)
POWER	One (1) 1.5VDC AA Battery		
BATTERY LIFE	>6 hours in near-IR Aim Mode		
DIMENSIONS	106 × 81 × 48 mm (4.2 × 3.2 × 1.9")		
WEIGHT (W/O BATTERY)	200 g (7 oz)		
WATERPROOF	20 m for 1 hr		

PART NO.	MODEL
IAIRORRLPTMAIMB	T-MAIM Black - Tactical Multi-spectral Aiming and Illumination Module (color Black)
IAIRORRLPTMAIMT	T-MAIM Tan - Tactical Multi-spectral Aiming and Illumination Module (color Tan)
IAIROHPLPTMAIMB	T-MAIM HP Black - Tactical High Power Multi-spectral Aiming and Illumination Module (color Black)
IAIROHPLPTMAIMT	T-MAIM HP Tan - Tactical High Power Multi-spectral Aiming and Illumination Module (color TAN)



8X36*

Daytime Binoculars

8X30C*

Daytime Binoculars

7X50*

Daytime Binoculars

Armasight's daytime binoculars offer plenty of magnification, solid waterproof construction, and a built-in range finder reticle designed for Military, Law Enforcement, and the outdoor adventurer's needs.

The binoculars provide a powerful magnification and crystal clear optics, which deliver a full range of color and clarity. The multicoated optics of binoculars is designed to enhance the resolution and contrast of your image in extremely bright conditions.

Built-in universal range finder allows for accurate target measurements and range estimates.

These binoculars are waterproof, shockproof, and can reach the standard of GJB/240 and GJB150.

8x36 is the compact binocular with a range finding reticle.

8x30C is the binocular with inter-build compass and a range finding reticle.

7x50 is the binocular with a range finding reticle.

- Designed for professional use
- Built-in universal rangefinder
- Multicoated optics
- Full rubber body armoring
- Individual eye focus
- Limited two-year warranty

SPECS	8X36	8×30C	7×50
MAGNIFICATION	8x	8x	7x
OBJECTIVE LENS DIAMETER	36 mm	30 mm	50 mm
FIELD OF VIEW	7.0°	8.0°	7.5°
EXIT PUPIL	4.4 mm	3.7 mm	7.1 mm
EYE RELIEF	16 mm	18 mm	23 mm
RESOLUTION	≤6.2"	≤4.5"	≤4.5"
RELATIVE BRIGHTNESS	20.3	14.0	50.4
DIMENSIONS	165 × 127 × 65 mm (6.5 × 5 × 2.6")	120 × 167 × 77 mm (4.7 × 6.6 × 3")	200 × 150 × 85 mm (7.9 × 5.9 × 3.3")
WEIGHT	0.6 kg (1.3 lb)	0.6 kg (1.3 lb)	1.36 kg (3.0 lb)

PART NO.	MODEL
DAB08X36RF0ARM1	8x36 Binoculars with Range Finder
DAB08X30RFCARM1	8x30C Binoculars with Compass & Range Finder
DAB07X50RF0ARM1	7x50 Binoculars with Range Finder



CORPORATE HQ

FLIR Systems, Inc.
27700 SW Parkway Ave.
Wilsonville, OR 97070
USA
PH: +1 866.477.3687

SAN FRANCISCO

Outdoor & Tactical Systems
815 Dubuque Avenue
South San Francisco CA 94080
PH: +1 888.959-2259
F: (888) 959-2260

WASHINGTON, D.C.

FLIR Systems, Inc.
2800 Crystal Drive, Suite 330
Arlington, VA 22202
USA
PH: +1.703.416.6666

ELKRIDGE

FLIR Systems, Inc.
7055 Troy Hill Dr, Suite 300
Elkridge, MD 21075
detection@flir.com
PH: +1.877.692.2120

BOSTON

FLIR Systems, Inc.
25 Esquire Road
North Billerica, MA 01862
USA
PH: +1.800.464.6372

HUNTSVILLE

FLIR Systems, Inc.
675 Discovery Drive
Suite 103
Huntsville, AL
USA
PH: +1.256.325.3547

PITTSBURGH

FLIR Systems, Inc.
Freeport, PA
USA
PH: +1.724.295.2880

STILLWATER

FLIR Systems, Inc.
1024 S. Innovation Way
Stillwater, OK 74074
USA
PH: +1.405.372.9535

CANADA

FLIR Systems Ltd.
3440 Francis-Hughes
Suite 120
Laval, QC H7L 5A9
Canada
PH: +1 450.663.4554

FLIR Systems Ltd.
4218 Commerce Circle
Victoria, BC V8Z 6N6
Canada
PH: +1 250 388 7232

U.K.

FLIR Systems Ltd.
2 Kings Hill Avenue
West Malling, Kent
ME19 4AQ
United Kingdom
PH: +44.1732.220011

GERMANY

FLIR Systems GmbH
Berner Strasse 81
D-60437 Frankfurt am Main
Germany
Tel.: +49 (0)69 95 00 900
Fax: +49 (0)69 95 00 9040
e-mail: flir@flir.com

SWEDEN

FLIR Systems AB
Antennvägen 6
187 66 Täby
Sweden
PH: +46.8.753.2500

BELGIUM

FLIR Commercial Systems
Luxemburgstraat 2
2321 Meer
Belgium
Tel. : +32 (0) 3665 5100
e-mail: flir@flir.com

NETHERLANDS

FLIR Systems CVS BV
Charles Petitweg 21
4847 NW Teteringen - Breda
The Netherlands
PH: +31 (0) 765 79 41 94
e-mail: flir@flir.com

MIDDLE EAST

FLIR Systems Saudi Arabia
Unit 127, First Floor
Plaza Building
Olaya Street
Riyadh 11481
Saudi Arabia
PH: +966 (11) 464 5323
F: +966 (11) 464 0438

FLIR Systems B.V. Abu Dhabi
Bldg C29 Office 302,
New Ministries Exit,
Khalifa Park Area
Abu Dhabi
United Arab Emirates

Equipment described herein may require US Government authorization for export purposes. Diversion contrary to US law is prohibited.
©2017 FLIR Systems, Inc. Specifications are subject to change. Created 01/25/17

saleshelp@flir.com

www.flir.com/OTS



The World's **Sixth Sense**®