

LoiterTrace™ Application License

Video Content Analytics Algorithm for Intelligent Loitering Detection

The Xtralis LoiterTrace application, by Honeywell, provides high performance loiter detection using video analytics specifically designed for indoor/outdoor operation. LoiterTrace is an image analysis tool able to detect humans remaining too long in the scene. The analytic uses advanced algorithms to maximize target detection and tracking. It is able to detect loitering persons even if they remain static for a long time (like when the person is sleeping). With simple “region of interest” configuration, LoiterTrace detection is suited for office lobbies, entrance halls of public buildings, etc.

LoiterTrace is now available for server platforms and edge devices. Supporting up to 32* channels on ADPRO® devices and up to 8* channels on HeiTel devices, LoiterTrace complements the powerful recording, transmission, alarm handling and flexible licensing capabilities of these established platforms with high performance video loitering detection. LoiterTrace is also available on Honeywell video cameras. Running on the device itself, LoiterTrace takes analytics to the video source, providing self-contained, high performance loitering detection on a networked device. Close integration with the device platform ensures compliant event management and alarm reporting for seamless system integration. LoiterTrace on the edge complements the rack-mount and mobile platforms with a simple camera approach to give solutions for every scenario.

Licensing

LoiterTrace is a software-only, licensed product. Licenses are available in bundles, and trial licenses are available free of charge. Speak to your salesperson for details. You can visit www.xtralis.com/analytics for the latest information on the product, and www.xtralis.com/license for information on the flexible licensing options available.

Camera Considerations

Note that LoiterTrace should only be used in the home position of PTZ cameras. Also note that built-in ring-lights on cameras are not recommended for 24/7 outdoor analytics applications; other sources of lighting should be considered.

* Hardware dependent



Typical Applications

- 24 hr/365 monitoring of public areas such as parks, car parks, lobbies and entrances
- Reducing undesirable behavior linked to substance abuse
- Reducing risk to property such as vandalism, graffiti and arson
- Reducing risk to people such as harassment near building entrances
- Reducing risk of crime such as identity theft near ATMs
- Alert staff to potential vagrants and reduce crime through early intervention

Specifications

- A video analytic application that detects loitering
- Designed for indoor and outdoor applications
- Detects moving targets and targets that stop
- Well suited to detecting people outside of foyers, etc.
- Intuitive parameters to minimize false alarms
- Ideal for initiating operator talk-down to prevent crime
- Ideal for monitoring uncrowded areas
- Unique settings specific to loiter detection

FEATURES AND BENEFITS

- Adjustable detection and mask areas to suit your application
- Support for IP and Analog cameras*
- Advanced logic to provide double knock with other events*
- Fast and easy installation and commissioning
- Remote servicing
- Independent object and contrast sensitivity settings
- Versatile loiter time adjustments to suit target and application
- Audio link can be used to deter offenders*
- Rapid verification and response with clearly highlighted targets

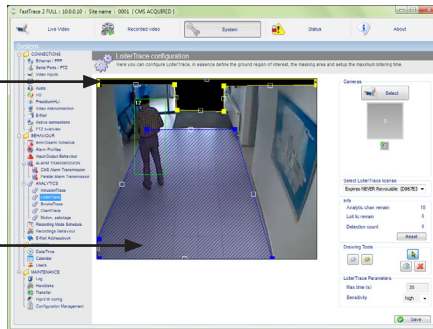
Xtralis® LoiterTrace™ Application License

Quick and Easy Setup

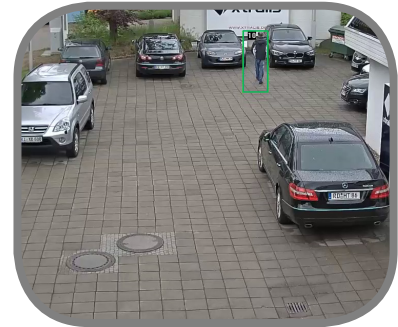
- Easy setup through the intuitive GUI:
 - License the software
 - Define the detection area
 - Define the loiter time
- Fine tune with the advanced parameters
- Calibrate the scene for even better performance
- Connect remotely for centralized support

Ability to create polygonal MASKING zones (regions of the image which should not be processed; such as a flashing light, trees, cars, OSD time stamp, etc.)

Polygonal DETECTION zones with selectable loitering sensitivity and time (low, normal, high)

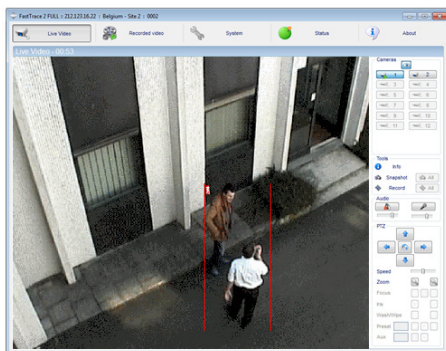


Typical Detection Scenes



Rapid Verification

- Analytic bounding boxes highlight what caused the alarm
- Live counters show how long someone has been loitering for
- Boxes and counters are available for live and stored video



ORDERING

49975900*	LoiterTrace on Honeywell Cameras Edge License DEMO, 60 Days – 1 Channel
49975901*	LoiterTrace on Honeywell Cameras Edge License Perpetual – 1 Channel
49975902*	LoiterTrace on Honeywell Cameras Edge License Perpetual – 2 Channels
49975903*	LoiterTrace on Honeywell Cameras Edge License Perpetual – 4 Channels
49975904*	LoiterTrace on Honeywell Cameras Edge License Perpetual – 8 Channels
49975905*	LoiterTrace on Honeywell Cameras Edge License Perpetual – 16 Channels
49975906*	LoiterTrace on Honeywell Cameras Edge License Perpetual – 32 Channels
49975907*	LoiterTrace on Honeywell Cameras Edge License Perpetual – 64 Channels
49975908*	LoiterTrace on Honeywell Cameras Edge License Perpetual – 128 Channels

* Honeywell camera licenses. For XO, ADPRO and Heitel devices, see other LoiterTrace license options.

COMPATIBLE HONEYWELL CAMERAS	
HBL6GR2	6 MP Rugged IR Network Bullet Camera
HBD8GR1	4K Rugged IR Network Bullet Camera
H4L6GR2	6 MP Rugged IR Network Minidome Camera
H4D8GR1	4K Rugged IR Network Minidome Camera
HCD8G	4K Network Box Camera
HFD6GR1	6 MP Rugged IR Network Fisheye Camera
HFD8GR1	12 MP Rugged IR Network Fisheye Camera
HEPZ302WO	1080p Explosion-Proof Network PTZ Dome
HDZ302DE	1080p 6" Indoor/Outdoor Network PTZ Dome
HDZ302D	1080p 5" Indoor/Outdoor Network PTZ Dome
HDZ302DIN	1080p Indoor In-Ceiling Network PTZ Dome

For more information

www.xtralis.com/analytics
www.honeywell.com/security/uk

Honeywell Security and Fire

Aston Fields Road
 Whitehouse Industrial Estate
 Runcorn, Cheshire, WA7 3DL, UK
 Tel: 08448 000 235
 Fax: +44 (0)1928 754 050
www.honeywell.com

ADPRO, IntrusionTrace and Xtralis are trademarks of Xtralis Inc. Honeywell reserves the right, without notification, to make changes in product design or specifications.

HSFV-XLOITRACD-01-UK(0118)DS-E
 January 2018
 © 2018 Honeywell International Inc.

